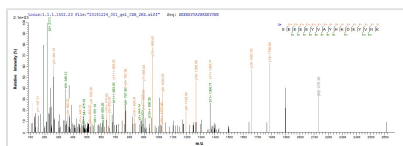




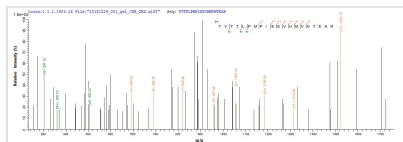
Recombinant Human herpesvirus 7 Envelope glycoprotein B (gB), partial

Product Code	CSB-EP346747HKB1
Abbreviation	Recombinant Human herpesvirus 7 gB protein, partial
Storage	The shelf life is related to many factors, storage state, buffer ingredients, storage temperature and the stability of the protein itself. Generally, the shelf life of liquid form is 6 months at -20°C/-80°C. The shelf life of lyophilized form is 12 months at -20°C/-80°C.
Uniprot No.	P52352
Storage Buffer	Tris-based buffer,50% glycerol
Product Type	Recombinant Protein
Immunogen Species	Human herpesvirus 7 (strain JI) (HHV-7) (Human T lymphotropic virus)
Purity	≥ 85% as determined by SDS-PAGE.
Sequence	DFVMTGHNQHLPPFRICSIATGTDLVRFDREVSCASYGSNIKTTEGILIIYKTKIEA HTFSVRTFKKELTFQTTYRDVGTVYFLDRTVTTLPMPIIEVHMVNTEARCLSSI SVKRSEEEYVAYHKDEYVNKTLDLIPLNFKSDTVRRYITTKEPFLRNGPLWYF STSTSINCIVTDCIAKTKYPDFDFALSTGETVEGSPFYNGINSKTFNEPTEKILFR NNYTMLKTFDDGSKGNF
Research Area	Signal Transduction
Source	E.coli
Target Names	gB
Protein Names	Recommended name: Envelope glycoprotein B Short name= gB
Expression Region	23-259aa
Notes	Repeated freezing and thawing is not recommended. Store working aliquots at 4°C for up to one week.
Tag Info	N-terminal 6xHis-tagged
Mol. Weight	31.4 kDa
Protein Length	Partial

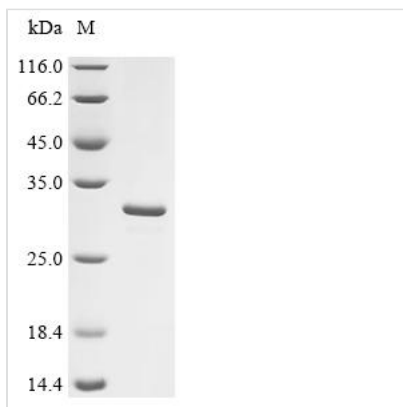
Image



Based on the SEQUEST from database of E.coli host and target protein, the LC-MS/MS Analysis result of CSB-EP346747HKB1 could indicate that this peptide derived from E.coli-expressed Human herpesvirus 7 (strain JI) (HHV-7) (Human T lymphotropic virus) gB.



Based on the SEQUEST from database of E.coli host and target protein, the LC-MS/MS Analysis result of CSB-EP346747HKB1 could indicate that this peptide derived from E.coli-expressed Human herpesvirus 7 (strain JI) (HHV-7) (Human T lymphotropic virus) gB.



(Tris-Glycine gel) Discontinuous SDS-PAGE (reduced) with 5% enrichment gel and 15% separation gel.

Reconstitution

We recommend that this vial be briefly centrifuged prior to opening to bring the contents to the bottom. Please reconstitute protein in deionized sterile water to a concentration of 0.1-1.0 mg/mL. We recommend to add 5-50% of glycerol (final concentration) and aliquot for long-term storage at -20°C/-80°C. Our default final concentration of glycerol is 50%. Customers could use it as reference.

Shelf Life

The shelf life is related to many factors, storage state, buffer ingredients, storage temperature and the stability of the protein itself. Generally, the shelf life of liquid form is 6 months at -20°C/-80°C. The shelf life of lyophilized form is 12 months at -20°C/-80°C.