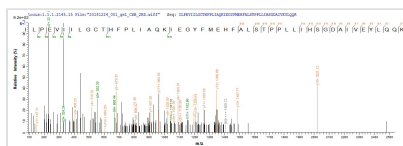




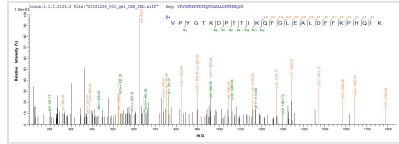
# Recombinant Helicobacter pylori Glutamate racemase (murl)

<b>Product Code</b>	CSB-EP475624HUX
<b>Abbreviation</b>	Recombinant Helicobacter pylori murl protein
<b>Storage</b>	The shelf life is related to many factors, storage state, buffer ingredients, storage temperature and the stability of the protein itself. Generally, the shelf life of liquid form is 6 months at -20°C/-80°C. The shelf life of lyophilized form is 12 months at -20°C/-80°C.
<b>Uniprot No.</b>	B5Z6S2
<b>Storage Buffer</b>	Tris-based buffer,50% glycerol
<b>Product Type</b>	Recombinant Proteins
<b>Immunogen Species</b>	Helicobacter pylori (strain G27)
<b>Purity</b>	≥ 85% as determined by SDS-PAGE.
<b>Sequence</b>	MKIGVFD SGVGGFSVLK SLLKAQLFDEI IYYGDSARVPYGTKDPTTIKQFGLEAL DFFKPHQIKLLIVACNTASALALEEMQKHSKIPIVGVIEPSILAIKQQVKEKNAPIL VLGKATIQSNAYDNALKQQGYLNVSHLATSFLVPLIEESILEGELLETCMRYFF TPLKILPEVIILGCTHFPLIAQKIEGYFMEHFALSTPPLLIHSGDAIVEYLQQKYAL KKNHAHFPKVEFHASGDVIWLEKQAKEWLKL
<b>Research Area</b>	Cardiovascular
<b>Source</b>	E.coli
<b>Target Names</b>	murl
<b>Protein Names</b>	Recommended name: Glutamate racemase EC= 5.1.1.3
<b>Expression Region</b>	1-255aa
<b>Notes</b>	Repeated freezing and thawing is not recommended. Store working aliquots at 4°C for up to one week.
<b>Tag Info</b>	N-terminal 10xHis-tagged and C-terminal Myc-tagged
<b>Mol. Weight</b>	35.9 kDa
<b>Protein Length</b>	Full Length

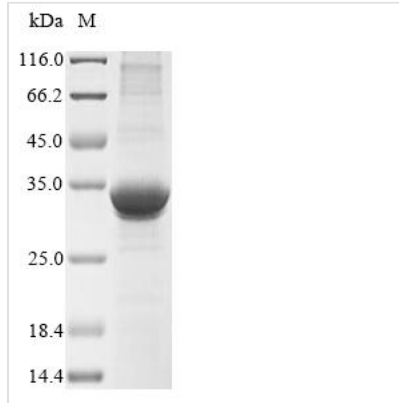
## Image



Based on the SEQUEST from database of E.coli host and target protein, the LC-MS/MS Analysis result of CSB-EP475624HUX could indicate that this peptide derived from E.coli-expressed Helicobacter pylori (strain G27) murl.



Based on the SEQUEST from database of E.coli host and target protein, the LC-MS/MS Analysis result of CSB-EP475624HUX could indicate that this peptide derived from E.coli-expressed *Helicobacter pylori* (strain G27) murl.



(Tris-Glycine gel) Discontinuous SDS-PAGE (reduced) with 5% enrichment gel and 15% separation gel.

### Shelf Life

The shelf life is related to many factors, storage state, buffer ingredients, storage temperature and the stability of the protein itself.

Generally, the shelf life of liquid form is 6 months at -20°C/-80°C. The shelf life of lyophilized form is 12 months at -20°C/-80°C.