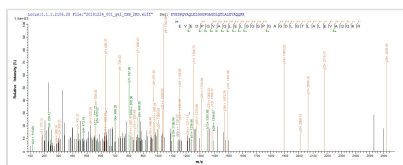




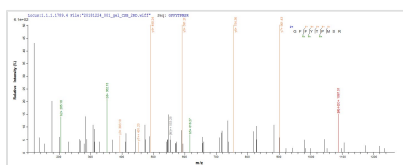
Recombinant Mouse Insulin-2 (Ins2)

Product Code	CSB-EP360644MO
Abbreviation	Recombinant Mouse Ins2 protein
Storage	The shelf life is related to many factors, storage state, buffer ingredients, storage temperature and the stability of the protein itself. Generally, the shelf life of liquid form is 6 months at -20°C/-80°C. The shelf life of lyophilized form is 12 months at -20°C/-80°C.
Uniprot No.	P01326
Storage Buffer	Tris-based buffer,50% glycerol
Product Type	Recombinant Protein
Immunogen Species	Mus musculus (Mouse)
Purity	≥ 85% as determined by SDS-PAGE.
Sequence	FVKQHLGSHLVEALYLVCGERGFFYTPMSRREVEDPQVAQLELGGGPGAG DLQTLALEVAQQKRGIVDQCCTSICSLYQLENYCN
Research Area	Others
Source	E.coli
Target Names	Ins2
Protein Names	Recommended name: Insulin-2Cleaved into the following 2 chains: 1. Insulin-2 B chain 2. Insulin-2 A chain
Expression Region	25-110aa
Notes	Repeated freezing and thawing is not recommended. Store working aliquots at 4°C for up to one week.
Tag Info	N-terminal 10xHis-tagged and C-terminal Myc-tagged
Mol. Weight	16.9 kDa
Protein Length	Full Length of Mature Protein

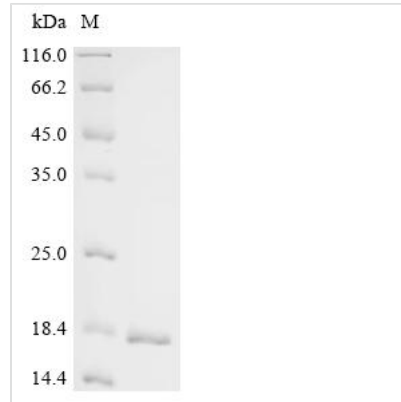
Image



Based on the SEQUEST from database of E.coli host and target protein, the LC-MS/MS Analysis result of CSB-EP360644MO could indicate that this peptide derived from E.coli-expressed Mus musculus (Mouse) Ins2.



Based on the SEQUEST from database of E.coli host and target protein, the LC-MS/MS Analysis result of CSB-EP360644MO could indicate that this peptide derived from E.coli-expressed Mus musculus (Mouse) Ins2.



(Tris-Glycine gel) Discontinuous SDS-PAGE (reduced) with 5% enrichment gel and 15% separation gel.

Reconstitution

We recommend that this vial be briefly centrifuged prior to opening to bring the contents to the bottom. Please reconstitute protein in deionized sterile water to a concentration of 0.1-1.0 mg/mL. We recommend to add 5-50% of glycerol (final concentration) and aliquot for long-term storage at -20°C/-80°C. Our default final concentration of glycerol is 50%. Customers could use it as reference.

Shelf Life

The shelf life is related to many factors, storage state, buffer ingredients, storage temperature and the stability of the protein itself. Generally, the shelf life of liquid form is 6 months at -20°C/-80°C. The shelf life of lyophilized form is 12 months at -20°C/-80°C.