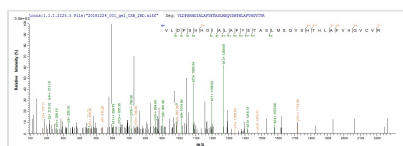




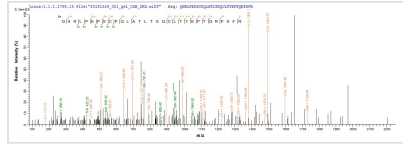
Recombinant Human Non-receptor tyrosine-protein kinase TYK2 (TYK2), partial

Product Code	CSB-EP025391HU1
Abbreviation	Recombinant Human TYK2 protein, partial
Storage	The shelf life is related to many factors, storage state, buffer ingredients, storage temperature and the stability of the protein itself. Generally, the shelf life of liquid form is 6 months at -20°C/-80°C. The shelf life of lyophilized form is 12 months at -20°C/-80°C.
Uniprot No.	P29597
Storage Buffer	Tris-based buffer,50% glycerol
Product Type	Recombinant Protein
Immunogen Species	Homo sapiens (Human)
Purity	≥ 85% as determined by SDS-PAGE.
Sequence	GETSNLIIMRGARASPRTLNLSQLSFHRVDQKEITQLSHLGQGTRTNVYEGRL RVEGSGDPEEGKMDDDEDPLVPGRDRGQELRVVLKVLDP SHHDIALAFYETAS LMSQVSHTHLAFVHGV CVRGPENIMVTEYVEHG PLDVWLR RERGRGHVPMAWK MVVAQQLASALSYLENKNLVHGNVCGRNILLARLGLAEGTSPFIKLSDPGVGL GALSREERVERIPWLAPECLPGGANSLS TAMDKWGF GATLLEICFDGEAPLQS RSPSEKEHFYQRQHR LPEPSCPQLATLTSQCLTYEPTQRPSFRTILRDLTRLQ P
Research Area	Signal Transduction
Source	E.coli
Target Names	TYK2
Expression Region	556-871aa
Notes	Repeated freezing and thawing is not recommended. Store working aliquots at 4°C for up to one week.
Tag Info	N-terminal 10xHis-tagged and C-terminal Myc-tagged
Mol. Weight	42.6 kDa
Protein Length	Partial

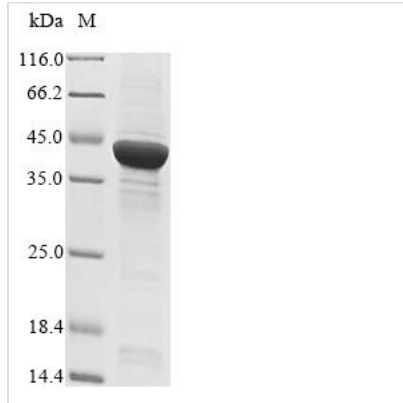
Image



Based on the SEQUEST from database of E.coli host and target protein, the LC-MS/MS Analysis result of CSB-EP025391HU1 could indicate that this peptide derived from E.coli-expressed Homo sapiens (Human) TYK2.



Based on the SEQUEST from database of E.coli host and target protein, the LC-MS/MS Analysis result of CSB-EP025391HU1 could indicate that this peptide derived from E.coli-expressed Homo sapiens (Human) TYK2.



(Tris-Glycine gel) Discontinuous SDS-PAGE (reduced) with 5% enrichment gel and 15% separation gel.

Reconstitution

We recommend that this vial be briefly centrifuged prior to opening to bring the contents to the bottom. Please reconstitute protein in deionized sterile water to a concentration of 0.1-1.0 mg/mL. We recommend to add 5-50% of glycerol (final concentration) and aliquot for long-term storage at -20°C/-80°C. Our default final concentration of glycerol is 50%. Customers could use it as reference.

Shelf Life

The shelf life is related to many factors, storage state, buffer ingredients, storage temperature and the stability of the protein itself. Generally, the shelf life of liquid form is 6 months at -20°C/-80°C. The shelf life of lyophilized form is 12 months at -20°C/-80°C.