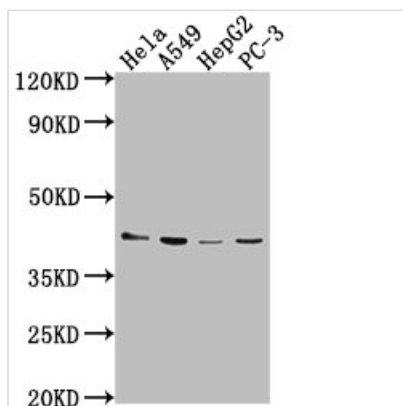




LPAR6 Antibody

Product Code	CSB-PA017336OA01HU
Storage	Upon receipt, store at -20°C or -80°C. Avoid repeated freeze.
Uniprot No.	P43657
Immunogen	Peptide sequence from Human Lysophosphatidic acid receptor 6 protein (292-313AA)
Raised In	Rabbit
Species Reactivity	Human
Tested Applications	ELISA, WB, IHC, IF; Recommended dilution: WB:1:1000-1:5000, IHC:1:200-1:500, IF:1:50-1:200
Form	Liquid
Conjugate	Non-conjugated
Storage Buffer	Preservative: 0.03% Proclin 300 Constituents: 50% Glycerol, 0.01M PBS, pH 7.4
Purification Method	>95%, Protein G purified
Isotype	IgG
Clonality	Polyclonal
Alias	Lysophosphatidic acid receptor 6 (LPA receptor 6) (LPA-6) (Oleoyl-L-alpha-lysophosphatidic acid receptor) (P2Y purinoceptor 5) (P2Y5) (Purinergic receptor 5) (RB intron encoded G-protein coupled receptor), LPAR6, P2RY5
Immunogen Species	Homo sapiens (Human)
Research Area	Signal Transduction
Target Names	LPAR6

Image



Western Blot

Positive WB detected in: HeLa whole cell lysate, A549 whole cell lysate, HepG2 whole cell lysate, PC-3 whole cell lysate

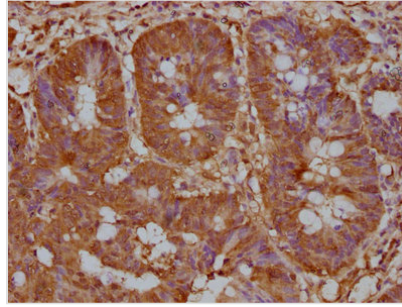
All lanes: LPAR6 antibody at 1:2000

Secondary

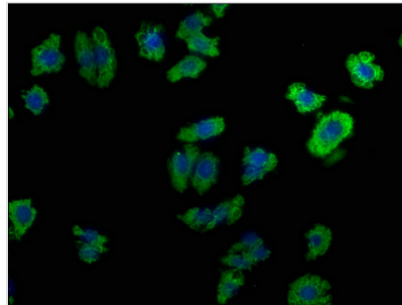
Goat polyclonal to rabbit IgG at 1/50000 dilution

Predicted band size: 40 kDa

Observed band size: 40 kDa



IHC image of CSB-PA017336OA01HU diluted at 1:200 and staining in paraffin-embedded human colon cancer performed on a Leica Bond™ system. After dewaxing and hydration, antigen retrieval was mediated by high pressure in a citrate buffer (pH 6.0). Section was blocked with 10% normal goat serum 30min at RT. Then primary antibody (1% BSA) was incubated at 4°C overnight. The primary is detected by a biotinylated secondary antibody and visualized using an HRP conjugated SP system.



Immunofluorescence staining of HepG2 cells with CSB-PA017336OA01HU at 1:100, counter-stained with DAPI. The cells were fixed in 4% formaldehyde, permeabilized using 0.2% Triton X-100 and blocked in 10% normal Goat Serum. The cells were then incubated with the antibody overnight at 4°C. The secondary antibody was Alexa Fluor 488-conjugated AffiniPure Goat Anti-Rabbit IgG(H+L).

Usage

For Research Use Only. Not for use in diagnostic or therapeutic procedures.