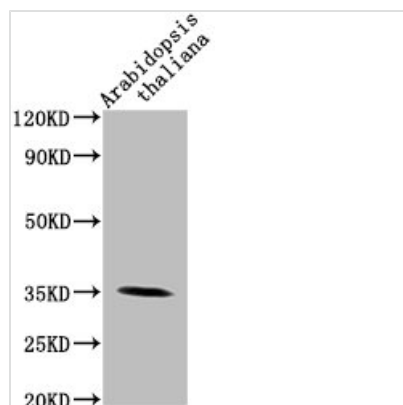




# PAP1 Antibody

|                            |   |
|----------------------------|---|
| <b>Product Code</b>        | CSB-PA529312LA01DOA   |
| <b>Storage</b>             | Upon receipt, store at -20°C or -80°C. Avoid repeated freeze.   |
| <b>Uniprot No.</b>         | O81439  |
| <b>Immunogen</b>           | Recombinant Arabidopsis thaliana Probable plastid-lipid-associated protein 1, chloroplastic protein (56-318AA)                            |
| <b>Raised In</b>           | Rabbit  |
| <b>Species Reactivity</b>  | Arabidopsis thaliana  |
| <b>Tested Applications</b> | ELISA, WB; Recommended dilution: WB:1:1000-1:5000   |
| <b>Form</b>                | Liquid  |
| <b>Conjugate</b>           | Non-conjugated  |
| <b>Storage Buffer</b>      | Preservative: 0.03% Proclin 300<br>Constituents: 50% Glycerol, 0.01M PBS, pH 7.4  |
| <b>Purification Method</b> | >95%, Protein G purified  |
| <b>Isotype</b>             | IgG   |
| <b>Clonality</b>           | Polyclonal  |
| <b>Alias</b>               | Probable plastid-lipid-associated protein 1, chloroplastic (AtPap1) (Fibrillin-1a) (Plastoglobulin 35) (AtPGL35), PAP1, FBN1a FIB1a PGL35 |
| <b>Immunogen Species</b>   | Arabidopsis thaliana (Mouse-ear cress)  |
| <b>Research Area</b>       | Cardiovascular  |
| <b>Target Names</b>        | PAP1  |

## Image



### Western Blot

Positive WB detected in: Arabidopsis thaliana lysate

All lanes: PAP1 antibody at 1:2000

Secondary

Goat polyclonal to rabbit IgG at 1/50000 dilution

Predicted band size: 35 kDa

Observed band size: 35 kDa

## Usage

For Research Use Only. Not for use in diagnostic or therapeutic procedures.