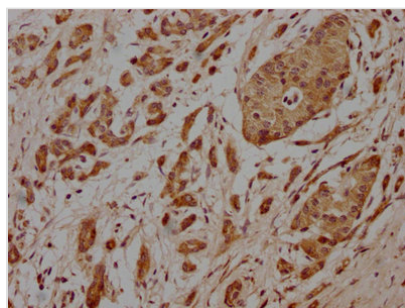




PCOLCE Antibody

Product Code	CSB-PA614881LA01HU
Storage	Upon receipt, store at -20°C or -80°C. Avoid repeated freeze.
Uniprot No.	Q15113
Immunogen	Recombinant Human Procollagen C-endopeptidase enhancer 1 protein (169-449AA)
Raised In	Rabbit
Species Reactivity	Human
Tested Applications	ELISA, IHC; Recommended dilution: IHC:1:20-1:200
Form	Liquid
Conjugate	Non-conjugated
Storage Buffer	Preservative: 0.03% Proclin 300 Constituents: 50% Glycerol, 0.01M PBS, pH 7.4
Purification Method	Antigen Affinity Purified
Isotype	IgG
Clonality	Polyclonal
Alias	Procollagen C-endopeptidase enhancer 1 (Procollagen COOH-terminal proteinase enhancer 1) (PCPE-1) (Procollagen C-proteinase enhancer 1) (Type 1 procollagen C-proteinase enhancer protein) (Type I procollagen COOH-terminal proteinase enhancer), PCOLCE, PCPE1
Immunogen Species	Homo sapiens (Human)
Research Area	Signal Transduction
Target Names	PCOLCE

Image



IHC image of CSB-PA614881LA01HU diluted at 1:100 and staining in paraffin-embedded human pancreatic cancer performed on a Leica Bond™ system. After dewaxing and hydration, antigen retrieval was mediated by high pressure in a citrate buffer (pH 6.0). Section was blocked with 10% normal goat serum 30min at RT. Then primary antibody (1% BSA) was incubated at 4°C overnight. The primary is detected by a biotinylated secondary antibody and visualized using an HRP conjugated SP system.

Usage

For Research Use Only. Not for use in diagnostic or therapeutic procedures.