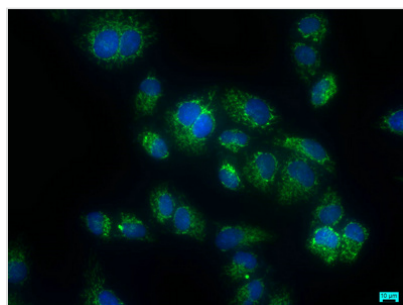




CARD16 Antibody

Product Code	CSB-PA682727LA01HU
Storage	Upon receipt, store at -20°C or -80°C. Avoid repeated freeze.
Uniprot No.	Q5EG05
Immunogen	Recombinant Human Caspase recruitment domain-containing protein 16 protein (1-197AA)
Raised In	Rabbit
Species Reactivity	Human
Tested Applications	ELISA, IF; Recommended dilution: IF:1:50-1:200
Form	Liquid
Conjugate	Non-conjugated
Storage Buffer	Preservative: 0.03% Proclin 300 Constituents: 50% Glycerol, 0.01M PBS, pH 7.4
Purification Method	Antigen Affinity Purified
Isotype	IgG
Clonality	Polyclonal
Alias	Caspase recruitment domain-containing protein 16 (Caspase recruitment domain-only protein 1) (CARD-only protein 1) (Caspase-1 inhibitor COP) (Pseudo interleukin-1 beta converting enzyme) (Pseudo-ICE) (Pseudo-IL1B-converting enzyme), CARD16, COP COP1
Immunogen Species	Homo sapiens (Human)
Research Area	Cell Biology
Target Names	CARD16

Image



Immunofluorescence staining of HeLa cells with CSB-PA682727LA01HU at 1:50, counter-stained with DAPI. The cells were fixed in 4% formaldehyde, permeabilized using 0.2% Triton X-100 and blocked in 10% normal Goat Serum. The cells were then incubated with the antibody overnight at 4°C. The secondary antibody was Alexa Fluor 488-conjugated AffiniPure Goat Anti-Rabbit IgG(H+L).

Usage

For Research Use Only. Not for use in diagnostic or therapeutic procedures.