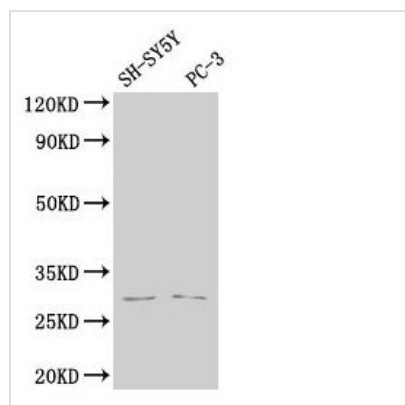




APH1B Antibody

| | |
|----------------------------|---|
| Product Code | CSB-PA819900NA01HU |
| Storage | Upon receipt, store at -20°C or -80°C. Avoid repeated freeze. |
| Uniprot No. | Q8WW43 |
| Immunogen | Peptide sequence from Human Gamma-secretase subunit APH-1B protein (93-110AA) |
| Raised In | Rabbit |
| Species Reactivity | Human |
| Tested Applications | ELISA, WB; Recommended dilution: WB:1:1000-1:5000 |
| Form | Liquid |
| Conjugate | Non-conjugated |
| Storage Buffer | Preservative: 0.03% Proclin 300 Constituents: 50% Glycerol, 0.01M PBS, pH 7.4 |
| Purification Method | >95%, Protein G purified |
| Isotype | IgG |
| Clonality | Polyclonal |
| Alias | Gamma-secretase subunit APH-1B (APH-1b) (Aph-1beta) (Presenilin-stabilization factor-like), APH1B, PSFL |
| Immunogen Species | Homo sapiens (Human) |
| Research Area | Neuroscience |
| Target Names | APH1B |

Image



Western Blot

Positive WB detected in: SH-SY5Y whole cell lysate, PC-3 whole cell lysate

All lanes: APH1B antibody at 1:2000

Secondary

Goat polyclonal to rabbit IgG at 1/50000 dilution

Predicted band size: 29, 25 kDa

Observed band size: 29 kDa