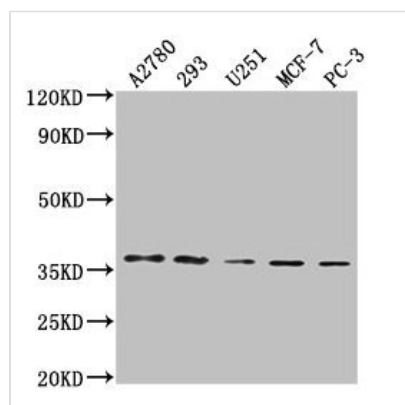




PDCL3 Antibody

Product Code	CSB-PA872479LA01HU
Storage	Upon receipt, store at -20°C or -80°C. Avoid repeated freeze.
Uniprot No.	Q9H2J4
Immunogen	Recombinant Human Phosducin-like protein 3 protein (1-239AA)
Raised In	Rabbit
Species Reactivity	Human
Tested Applications	ELISA, WB, IF; Recommended dilution: WB:1:1000-1:5000, IF:1:50-1:200
Form	Liquid
Conjugate	Non-conjugated
Storage Buffer	Preservative: 0.03% Proclin 300 Constituents: 50% Glycerol, 0.01M PBS, pH 7.4
Purification Method	>95%, Protein G purified
Isotype	IgG
Clonality	Polyclonal
Alias	Phosducin-like protein 3 (HTPHLP) (PhPL3) (Viral IAP-associated factor 1) (VIAF-1), PDCL3, PhLP2A VIAF1
Immunogen Species	Homo sapiens (Human)
Research Area	Cell Biology
Target Names	PDCL3

Image



Western Blot

Positive WB detected in: A2780 whole cell lysate, 293 whole cell lysate, U251 whole cell lysate, MCF-7 whole cell lysate, PC-3 whole cell lysate

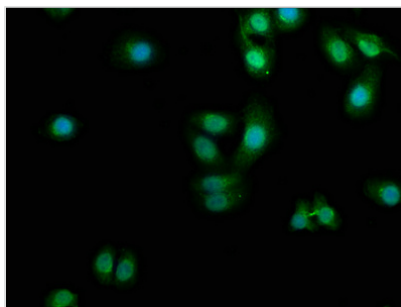
All lanes: PDCL3 antibody at 1:2000

Secondary

Goat polyclonal to rabbit IgG at 1/50000 dilution

Predicted band size: 28 kDa

Observed band size: 37 kDa



Immunofluorescence staining of HepG2 cells with CSB-PA872479LA01HU at 1:100, counter-stained with DAPI. The cells were fixed in 4% formaldehyde, permeabilized using 0.2% Triton X-100 and blocked in 10% normal Goat Serum. The cells were then incubated with the antibody overnight at 4°C. The secondary antibody was Alexa Fluor 488-conjugated AffiniPure Goat Anti-Rabbit IgG(H+L).