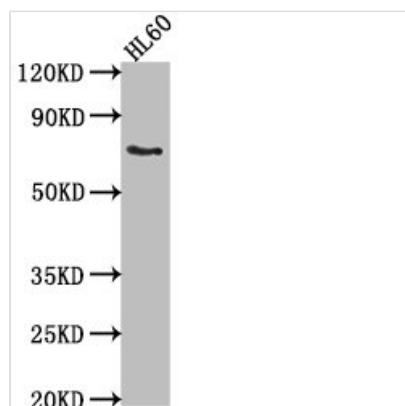




# LRIT1 Antibody

<b>Product Code</b>	CSB-PA879074LA01HU
<b>Storage</b>	Upon receipt, store at -20°C or -80°C. Avoid repeated freeze.
<b>Uniprot No.</b>	Q9P2V4
<b>Immunogen</b>	Recombinant Human Leucine-rich repeat, immunoglobulin-like domain and transmembrane domain-containing protein 1 protein (251-456AA)
<b>Raised In</b>	Rabbit
<b>Species Reactivity</b>	Human
<b>Tested Applications</b>	ELISA, WB; Recommended dilution: WB:1:1000-1:5000
<b>Form</b>	Liquid
<b>Conjugate</b>	Non-conjugated
<b>Storage Buffer</b>	Preservative: 0.03% Proclin 300 Constituents: 50% Glycerol, 0.01M PBS, pH 7.4
<b>Purification Method</b>	>95%, Protein G purified
<b>Isotype</b>	IgG
<b>Clonality</b>	Polyclonal
<b>Alias</b>	Leucine-rich repeat, immunoglobulin-like domain and transmembrane domain-containing protein 1 (Leucine-rich repeat-containing protein 21) (Photoreceptor-associated LRR superfamily protein) (Retina-specific protein PAL), LRIT1, LRRC21 PAL
<b>Immunogen Species</b>	Homo sapiens (Human)
<b>Research Area</b>	Signal Transduction
<b>Target Names</b>	LRIT1

## Image



### Western Blot

Positive WB detected in: HL60 whole cell lysate  
 All lanes: LRIT1 antibody at 1:2000  
 Secondary  
 Goat polyclonal to rabbit IgG at 1/50000 dilution  
 Predicted band size: 69 kDa  
 Observed band size: 69 kDa

## Usage

For Research Use Only. Not for use in diagnostic or therapeutic procedures.