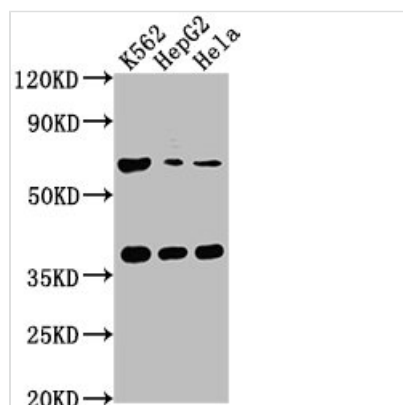




CFHR5 Antibody

Product Code	CSB-PA883624LA01HU
Storage	Upon receipt, store at -20°C or -80°C. Avoid repeated freeze.
Uniprot No.	Q9BXR6
Immunogen	Recombinant Human Complement factor H-related protein 5 protein (374-569AA)
Raised In	Rabbit
Species Reactivity	Human
Tested Applications	ELISA, WB, IHC; Recommended dilution: WB:1:500-1:2000, IHC:1:20-1:200
Form	Liquid
Conjugate	Non-conjugated
Storage Buffer	Preservative: 0.03% Proclin 300 Constituents: 50% Glycerol, 0.01M PBS, pH 7.4
Purification Method	Antigen Affinity Purified
Isotype	IgG
Clonality	Polyclonal
Alias	Complement factor H-related protein 5 (FHR-5), CFHR5, CFHL5 FHR5
Immunogen Species	Homo sapiens (Human)
Research Area	Immunology
Target Names	CFHR5

Image



Western Blot

Positive WB detected in: K562 whole cell lysate, HepG2 whole cell lysate, HeLa whole cell lysate

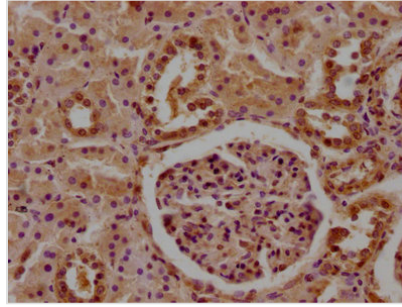
All lanes: CFHR5 antibody at 1:1000

Secondary

Goat polyclonal to rabbit IgG at 1/50000 dilution

Predicted band size: 65 kDa

Observed band size: 65 kDa



IHC image of CSB-PA883624LA01HU diluted at 1:100 and staining in paraffin-embedded human kidney tissue performed on a Leica Bond™ system. After dewaxing and hydration, antigen retrieval was mediated by high pressure in a citrate buffer (pH 6.0). Section was blocked with 10% normal goat serum 30min at RT. Then primary antibody (1% BSA) was incubated at 4°C overnight. The primary is detected by a biotinylated secondary antibody and visualized using an HRP conjugated SP system.

Usage

For Research Use Only. Not for use in diagnostic or therapeutic procedures.