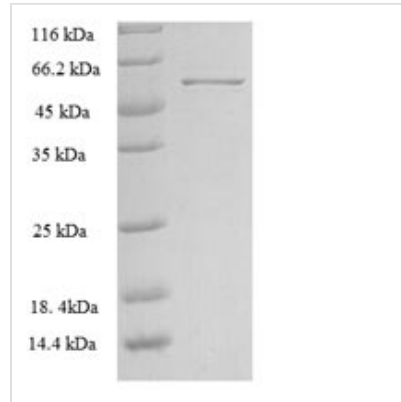




Recombinant Human Rho guanine nucleotide exchange factor 7 (ARHGEF7), partial

Product Code	CSB-EP618876HU
Relevance	Acts as a RAC1 guanine nucleotide exchange factor (GEF) and can induce membrane ruffling. Functions in cell migration, attachment and cell spreading. Promotes targeting of RAC1 to focal adhesions. May function as a positive regulator of apoptosis. Downstream of NMDA receptors and CaMKK-CaMK1 signaling cascade, promotes the formation of spines and synapses in hippocampal neurons. ³ Publications
Abbreviation	Recombinant Human ARHGEF7 protein, partial
Storage	The shelf life is related to many factors, storage state, buffer ingredients, storage temperature and the stability of the protein itself. Generally, the shelf life of liquid form is 6 months at -20°C/-80°C. The shelf life of lyophilized form is 12 months at -20°C/-80°C.
Uniprot No.	Q14155
Alias	Beta-PixCOOL-1;PAK-interacting exchange factor betap85
Product Type	Recombinant Protein
Immunogen Species	Homo sapiens (Human)
Purity	≥ 90% as determined by SDS-PAGE.
Sequence	MNSAEQTVTWLITLGVLESPKKTISDPEGFLQASLKDGVVLCRLLELLPGTIEK VYPEPRSESECLSNIREFLRGCASLRLELLFPPSQPPQHLVTTILLSASTFDAN DLYQGQNFNKVLSSLVTLNKVTADIGLGSDSVCARPSSHRIKSFDSLGSQSLH TRTSKLFQGQYRSLDMDNSNNQLVVRKFNQQTNEDELSFSKGDVIHVTR VEEGGWEGTLNGRTGWFPSNYVREVKASEKPVSP
Research Area	Neuroscience
Source	E.coli
Target Names	ARHGEF7
Expression Region	1-250aa
Notes	Repeated freezing and thawing is not recommended. Store working aliquots at 4°C for up to one week.
Tag Info	N-terminal GST-tagged
Mol. Weight	54.8kDa
Protein Length	Partial
Image	



(Tris-Glycine gel) Discontinuous SDS-PAGE (reduced) with 5% enrichment gel and 15% separation gel.

Reconstitution

We recommend that this vial be briefly centrifuged prior to opening to bring the contents to the bottom. Please reconstitute protein in deionized sterile water to a concentration of 0.1-1.0 mg/mL. We recommend to add 5-50% of glycerol (final concentration) and aliquot for long-term storage at -20°C/-80°C. Our default final concentration of glycerol is 50%. Customers could use it as reference.

Shelf Life

The shelf life is related to many factors, storage state, buffer ingredients, storage temperature and the stability of the protein itself. Generally, the shelf life of liquid form is 6 months at -20°C/-80°C. The shelf life of lyophilized form is 12 months at -20°C/-80°C.