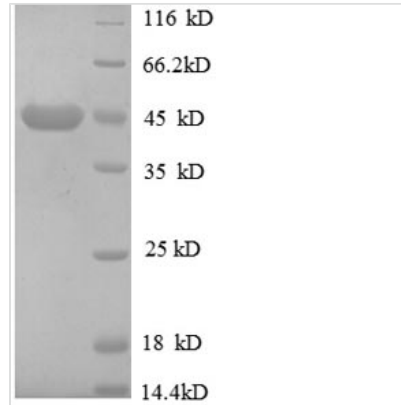




Recombinant Human Cation-independent mannose-6-phosphate receptor (IGF2R), partial

Product Code	CSB-EP011093HU
Relevance	Transport of phosphorylated lysosomal enzymes from the Golgi complex and the cell surface to lysosomes. Lysosomal enzymes bearing phosphomannosyl residues bind specifically to mannose-6-phosphate receptors in the Golgi apparatus and the resulting receptor-ligand complex is transported to an acidic prelysosomal compartment where the low pH mediates the dissociation of the complex.
Abbreviation	Recombinant Human IGF2R protein, partial
Storage	The shelf life is related to many factors, storage state, buffer ingredients, storage temperature and the stability of the protein itself. Generally, the shelf life of liquid form is 6 months at -20°C/-80°C. The shelf life of lyophilized form is 12 months at -20°C/-80°C.
Uniprot No.	P11717
Product Type	Recombinant Proteins
Immunogen Species	Homo sapiens (Human)
Purity	≥ 90% as determined by SDS-PAGE.
Sequence	KKERRETVISKLTTCRRSSNVSYKYSKVNKEEETDENETEWLMEEIQLPPPR QGKEGQENGHITTKSVKALSSLHGDDQDSEDEVLTIPVVKVHSGRGAGAESS HPVRNAQSNALQEREDDRVGLVRGEKARKGKSSSAQQKTVSSTKLVSFHDD SDEDLLHI
Research Area	Transport
Source	E.coli
Target Names	IGF2R
Expression Region	2328-2491aa
Notes	Repeated freezing and thawing is not recommended. Store working aliquots at 4°C for up to one week.
Tag Info	N-terminal GST-tagged
Mol. Weight	45.3kDa
Protein Length	Partial
Image	



(Tris-Glycine gel) Discontinuous SDS-PAGE (reduced) with 5% enrichment gel and 15% separation gel.

Shelf Life

The shelf life is related to many factors, storage state, buffer ingredients, storage temperature and the stability of the protein itself.

Generally, the shelf life of liquid form is 6 months at -20°C/-80°C. The shelf life of lyophilized form is 12 months at -20°C/-80°C.