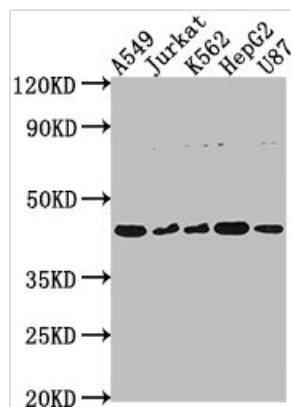




# DNASE2B Antibody

<b>Product Code</b>	CSB-PA841227LA01HU
<b>Storage</b>	Upon receipt, store at -20°C or -80°C. Avoid repeated freeze.
<b>Uniprot No.</b>	Q8WZ79
<b>Immunogen</b>	Recombinant Human Deoxyribonuclease-2-beta protein (68-281AA)
<b>Raised In</b>	Rabbit
<b>Species Reactivity</b>	Human
<b>Tested Applications</b>	ELISA, WB; Recommended dilution: WB:1:1000-1:5000
<b>Form</b>	Liquid
<b>Conjugate</b>	Non-conjugated
<b>Storage Buffer</b>	Preservative: 0.03% Proclin 300 Constituents: 50% Glycerol, 0.01M PBS, pH 7.4
<b>Purification Method</b>	>95%, Protein G purified
<b>Isotype</b>	IgG
<b>Clonality</b>	Polyclonal
<b>Alias</b>	Deoxyribonuclease-2-beta (EC 3.1.22.1) (DNase II-like acid DNase) (DNase2-like acid DNase) (Deoxyribonuclease II beta) (DNase II beta) (Endonuclease DLAD), DNASE2B, DLAD
<b>Immunogen Species</b>	Homo sapiens (Human)
<b>Research Area</b>	Epigenetics and Nuclear Signaling
<b>Target Names</b>	DNASE2B

## Image



### Western Blot

Positive WB detected in: A549 whole cell lysate, Jurkat whole cell lysate, K562 whole cell lysate, HepG2 whole cell lysate, U87 whole cell lysate  
All lanes: DNASE2B antibody at 1:2000

### Secondary

Goat polyclonal to rabbit IgG at 1/50000 dilution  
Predicted band size: 42, 18 kDa  
Observed band size: 42 kDa