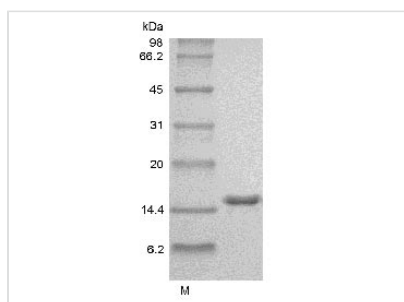




Recombinant Human Interleukin-2 (IL2), partial (Active) (GMP)

Product Code	CSB-AP005811HU
Uniprot No.	P60568
Form	Lyophilized powder
Storage Buffer	Lyophilized from a 0.2 μm filtered concentrated solution in 20 mM PB, pH 3.5.
Product Type	Interleukin
Immunogen Species	Homo sapiens (Human)
Biological Activity	Fully biologically active when compared to standard. The ED50 as determined by a cell proliferation assay using murine CTLL-2 cells is less than 0.1 ng/ml, corresponding to a specific activity of > 1.0 × 10 ⁷ IU/mg.
Purity	> 98 % by SDS-PAGE and HPLC analyses.
Sequence	APTSSTKKTQLQLEHLLLDLQMILNGINNYKNPKLTRMLTFKGYMPKKATELK HLQCLEEEELKPLEEVNLAQSKNFHLRPRDLISNINVIVLELKGSETTFMCEYAD ETATIVEFLNRWITFCQSIISTLT
Research Area	Immunology
Source	E.Coli
Target Names	IL2
Expression Region	21-153aa
Notes	Repeated freezing and thawing is not recommended. Store working aliquots at 4°C for up to one week.
Tag Info	Tag-Free
Mol. Weight	15.4 kDa
Protein Length	Partial
PubMed ID	6312994; 6403867; 6306584; 6324170; 6330695; 6608729; 7722480; 8824916; 15489334; 3491296; 3264184; 6333684; 2793860; 1396583; 3500515; 1631562; 1510960; 7529123; 16293754; 16477002

Image



(Tris-Glycine gel) Discontinuous SDS-PAGE (reduced) with 5% enrichment gel and 15% separation gel.

**Endotoxin**

Less than 0.01 EU/ μ g of rHuIL-2 GMP as determined by LAL method.

Reconstitution

We recommend that this vial be briefly centrifuged prior to opening to bring the contents to the bottom. Please reconstitute protein in deionized sterile water to a concentration of 0.1-1.0 mg/mL. We recommend to add 5-50% of glycerol (final concentration) and aliquot for long-term storage at -20°C/-80°C. Our default final concentration of glycerol is 50%. Customers could use it as reference.

Shelf Life

The shelf life is related to many factors, storage state, buffer ingredients, storage temperature and the stability of the protein itself.

Generally, the shelf life of liquid form is 6 months at -20°C/-80°C. The shelf life of lyophilized form is 12 months at -20°C/-80°C.