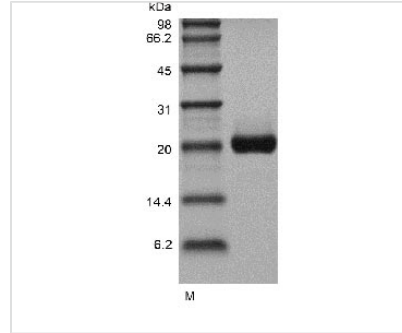




Recombinant Human Interleukin-6 (IL6) (Active) (GMP)

Product Code	CSB-AP005841HU
Uniprot No.	P05231
Form	Lyophilized powder
Storage Buffer	Lyophilized from a 0.2 µm filtered concentrated solution in 20 mM Tris-HCl, pH 8.0, 150 mM NaCl.
Product Type	Interleukin
Immunogen Species	Homo sapiens (Human)
Biological Activity	Assay #1: Fully biologically active when compared to standard. The ED50 as determined by a cell proliferation assay using IL-6-dependent murine 7TD1 cells is less than 0.1 ng/ml, corresponding to a specific activity of > 1.0 × 10 ⁷ IU/mg. Assay #2: Fully biologically active when compared to standard. The ED50 as determined by a cell proliferation assay using IL-6-dependent murine T1165 cells is less than 0.8 ng/ml, corresponding to a specific activity of > 1.25 × 10 ⁶ IU/mg.
Purity	> 98 % by SDS-PAGE and HPLC analyses.
Sequence	VPPGEDSKDVAAPHRQPLTSSERIDKQIRYILDGISALRKETCNKSNMCESSKE ALAENNLNLPKMAEKDGCQSGFNEETCLVKIITGLLEFEVYLEYLQNRFESSE EQARAVQMSTKVLIQFLQKKAKNLDAITTPDPTTNASLLTKLQAQNQWLQDMT THLILRSFKEFLQSSLRALRQM
Research Area	Immunology
Source	E.Coli
Target Names	IL6
Expression Region	30-212aa
Notes	Repeated freezing and thawing is not recommended. Store working aliquots at 4°C for up to one week.
Tag Info	Tag-Free
Mol. Weight	20.8 kDa
Protein Length	Full Length of Mature Protein
PubMed ID	3491322; 3500852; 3538015; 3023045; 3320204; 2789513; 3758081; 3266463; 1291290; 15489334; 3279116; 2610854; 1883960; 7851440; 2472117; 2037043; 8555185; 9159484; 9118960; 9769329; 11001912; 11355017; 12768442; 26091039

Image



(Tris-Glycine gel) Discontinuous SDS-PAGE (reduced) with 5% enrichment gel and 15% separation gel.

Endotoxin

Less than 0.01 EU/ μ g of rHull-6 GMP as determined by LAL method.

Reconstitution

We recommend that this vial be briefly centrifuged prior to opening to bring the contents to the bottom. Please reconstitute protein in deionized sterile water to a concentration of 0.1-1.0 mg/mL. We recommend to add 5-50% of glycerol (final concentration) and aliquot for long-term storage at -20°C/-80°C. Our default final concentration of glycerol is 50%. Customers could use it as reference.

Shelf Life

The shelf life is related to many factors, storage state, buffer ingredients, storage temperature and the stability of the protein itself.

Generally, the shelf life of liquid form is 6 months at -20°C/-80°C. The shelf life of lyophilized form is 12 months at -20°C/-80°C.