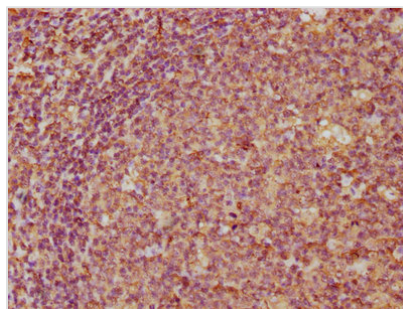




CCL21 Antibody

Product Code	CSB-PA004785DA01HU
Storage	Upon receipt, store at -20°C or -80°C. Avoid repeated freeze.
Uniprot No.	O00585
Immunogen	Recombinant Human C-C motif chemokine 21 protein (24-134AA)
Raised In	Rabbit
Species Reactivity	Human
Tested Applications	ELISA, IHC; Recommended dilution: IHC:1:200-1:500
Form	Liquid
Conjugate	Non-conjugated
Storage Buffer	Preservative: 0.03% Proclin 300 Constituents: 50% Glycerol, 0.01M PBS, PH 7.4
Purification Method	>95%, Protein G purified
Isotype	IgG
Clonality	Polyclonal
Alias	C-C motif chemokine 21 (6Ckine) (Beta-chemokine exodus-2) (Secondary lymphoid-tissue chemokine) (SLC) (Small-inducible cytokine A21), CCL21, SCYA21
Immunogen Species	Homo sapiens (Human)
Research Area	Immunology
Target Names	CCL21

Image



IHC image of CSB-PA004785DA01HU diluted at 1:300 and staining in paraffin-embedded human tonsil tissue performed on a Leica BondTM system. After dewaxing and hydration, antigen retrieval was mediated by high pressure in a citrate buffer (pH 6.0). Section was blocked with 10% normal goat serum 30min at RT. Then primary antibody (1% BSA) was incubated at 4°C overnight. The primary is detected by a biotinylated secondary antibody and visualized using an HRP conjugated SP system.