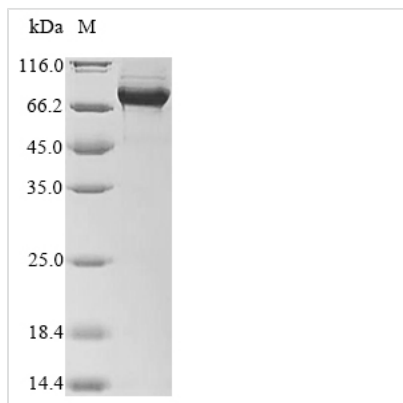




# Recombinant Human Nuclear body protein SP140-like protein (SP140L)

|                          |  |
|--------------------------|--|
| <b>Product Code</b>      | CSB-EP875697HU   |
| <b>Abbreviation</b>      | Recombinant Human SP140L protein   |
| <b>Storage</b>           | The shelf life is related to many factors, storage state, buffer ingredients, storage temperature and the stability of the protein itself. Generally, the shelf life of liquid form is 6 months at -20°C/-80°C. The shelf life of lyophilized form is 12 months at -20°C/-80°C.  |
| <b>Uniprot No.</b>       | Q9H930   |
| <b>Storage Buffer</b>    | Tris-based buffer,50% glycerol   |
| <b>Product Type</b>      | Recombinant Proteins   |
| <b>Immunogen Species</b> | Homo sapiens (Human)   |
| <b>Purity</b>            | ≥ 90% as determined by SDS-PAGE.   |
| <b>Sequence</b>          | MAGGGSDLSTRGLNGGVSQVANEMNHLPAHSQSLQRLFTEDQDVDEGLVYD<br>TVFKHFKRHKLEISNAIKKTFPFLEGLRDRELITNKMFEDESDSCRNLVPVQRV<br>VYNVLSELEKTFNLSVLEALFSEVNMQEYPDLIHIYKSFKNAIQDKLSFQESDRK<br>EREERPDIKLSLKQGEVPESPEARKESDQACGKMDTVDIANNSTLGKPKRKR<br>KKKGHWSRMGTRTQKNNQQNDNSKADGQLVSSEKKANMNLKDLSKIRGRK<br>RGKPGTHFTQSDRAPQKRVRSRASRKHKDETVDFQAPLLPVTCCGGVKGILHK<br>EKLEQGTAKCIQTEDGKWFTPMFEIKGGYARSKNWRLSVRCGGWPLRRL<br>MEEGSLPNPPRIYYRNKKRILKSQNNSSVDPCMRNLDECEVCRDGGELFCCD<br>TCSRVFHEDCHIPPESEKTPWNCIFCRMKESPGSQCCQESEVLERQMCP<br>EQLKCEFLLLKVYCCSESSFFAKIPYYYYIYREACQGLKEPMWLDKIKKRLNEHG<br>YPQVEGFVQDMRLIFQNHRSYKYKDFGQMGLRLEAEFEKDFKEVFAIQETN<br>GNS |
| <b>Research Area</b>     | Others   |
| <b>Source</b>            | E.coli   |
| <b>Target Names</b>      | SP140L   |
| <b>Protein Names</b>     | Recommended name: Nuclear body protein SP140-like protein  |
| <b>Expression Region</b> | 1-580aa  |
| <b>Notes</b>             | Repeated freezing and thawing is not recommended. Store working aliquots at 4°C for up to one week.  |
| <b>Tag Info</b>          | N-terminal 10xHis-tagged and C-terminal Myc-tagged   |
| <b>Mol. Weight</b>       | 74.4 kDa   |
| <b>Protein Length</b>    | Full Length  |
| <b>Image</b>             |  |



(Tris-Glycine gel) Discontinuous SDS-PAGE (reduced) with 5% enrichment gel and 15% separation gel.

### Shelf Life

The shelf life is related to many factors, storage state, buffer ingredients, storage temperature and the stability of the protein itself.

Generally, the shelf life of liquid form is 6 months at -20°C/-80°C. The shelf life of lyophilized form is 12 months at -20°C/-80°C.