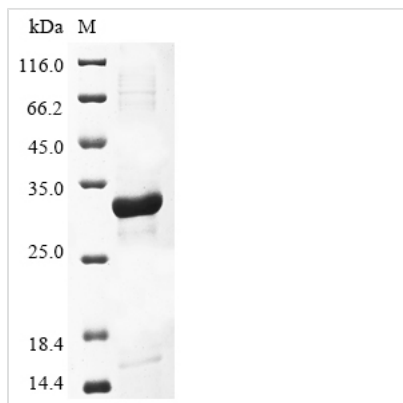




# Recombinant Lymphocytic choriomeningitis virus Pre-glycoprotein polyprotein GP complex (GPC), partial

<b>Product Code</b>	CSB-EP362127LKZ1
<b>Abbreviation</b>	Recombinant Lymphocytic choriomeningitis virus GPC protein, partial
<b>Storage</b>	The shelf life is related to many factors, storage state, buffer ingredients, storage temperature and the stability of the protein itself. Generally, the shelf life of liquid form is 6 months at -20°C/-80°C. The shelf life of lyophilized form is 12 months at -20°C/-80°C.
<b>Uniprot No.</b>	P07399
<b>Storage Buffer</b>	Tris-based buffer,50% glycerol
<b>Product Type</b>	Recombinant Proteins
<b>Immunogen Species</b>	Lymphocytic choriomeningitis virus (strain WE) (LCMV)
<b>Purity</b>	Greater than 85% as determined by SDS-PAGE.
<b>Sequence</b>	MYGLNGPDIYKGVYQFKSVEFDMSHLNLTMPNACSVNNSHHYISMGSSGLEP TFTNDSILNHNFCNLTSALNKKSFDHTLMSIVSSLHLSIRGNSNYKAVSCDFNN GITIQYNLSSSDPQSAMSQCRTFRGRVLDMFRFAFGGKYMRSGWGWGTGSDG KTTWCSQTSYQYLIQNRWTWENHCRYAGPFGMSRILFAQEKTKFLTRRLS
<b>Research Area</b>	Signal Transduction
<b>Source</b>	E.coli
<b>Target Names</b>	GPC
<b>Protein Names</b>	Recommended name: Pre-glycoprotein polyprotein GP complex Short name= Pre-GP-C Cleaved into the following 3 chains: 1. Stable signal peptide Short name= 2. SSP 3. Glycoprotein G1 Short name= 4. GP1 5. Glycoprotein G2
<b>Expression Region</b>	59-265aa
<b>Notes</b>	Repeated freezing and thawing is not recommended. Store working aliquots at 4°C for up to one week.
<b>Tag Info</b>	N-terminal 6xHis-tagged and C-terminal Myc-tagged
<b>Mol. Weight</b>	30.9 kDa
<b>Protein Length</b>	Partial
<b>Image</b>	



(Tris-Glycine gel) Discontinuous SDS-PAGE (reduced) with 5% enrichment gel and 15% separation gel.

### Shelf Life

The shelf life is related to many factors, storage state, buffer ingredients, storage temperature and the stability of the protein itself.

Generally, the shelf life of liquid form is 6 months at  $-20^{\circ}\text{C}/-80^{\circ}\text{C}$ . The shelf life of lyophilized form is 12 months at  $-20^{\circ}\text{C}/-80^{\circ}\text{C}$ .