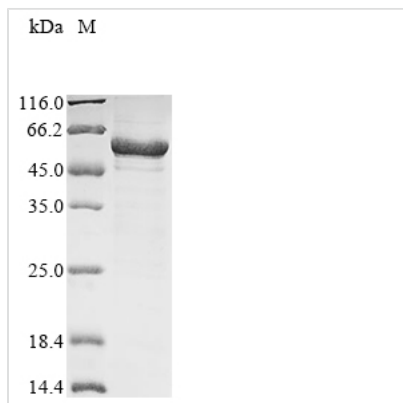




Recombinant Mouse Lipoprotein lipase (Lpl)

Product Code	CSB-EP013065MO
Abbreviation	Recombinant Mouse Lpl protein
Storage	The shelf life is related to many factors, storage state, buffer ingredients, storage temperature and the stability of the protein itself. Generally, the shelf life of liquid form is 6 months at -20°C/-80°C. The shelf life of lyophilized form is 12 months at -20°C/-80°C.
Uniprot No.	P11152
Storage Buffer	Tris-based buffer,50% glycerol
Product Type	Recombinant Proteins
Immunogen Species	Mus musculus (Mouse)
Purity	≥ 90% as determined by SDS-PAGE.
Sequence	ADAGRDFSDIESKFALRTPEDTAEDTCHLIPGLADSVSNCHFHNHSSKTFVVIHG WTVTGMYESWVPKLVAALYKREPDSNVIVVDWLYRAQQHYPVSAGYTKLVG NDVARFINWMEEEFNYPLDNVHLLGYSLGAHAAGVAGSLTNKKVNRITGLDPA GPNFEYAEAPSRLLSPDDADFVDVLHTFTRGSPGRSIGIQKPVGHVDIYPNGGT FQPGCNIGEAIRVIAERGLGDVDQLVKCSHERSIHLFIDSLLEENPSKAYRCN SKEAFEKGLCLSCRKNRCNNLGYEINKVRAKRSSKMYLKTRSQMPYKVFHYQ VKIHFSGTEDGKQHNQAFEISLYGTVAESENIPFTLPEVSTNKTYSFLLIYTEVDIG ELLMMLKLVWISDSYFSWPDWWSSPSFVIERIRVKAGETQKKVIFCAREKVS HLQKGD SAVFVKCHDKSLKKS
Research Area	Signal Transduction
Source	E.coli
Target Names	Lpl
Protein Names	Recommended name: Lipoprotein lipase Short name= LPL EC= 3.1.1.34
Expression Region	28-474aa
Notes	Repeated freezing and thawing is not recommended. Store working aliquots at 4°C for up to one week.
Tag Info	N-terminal 10xHis-tagged and C-terminal Myc-tagged
Mol. Weight	57.3 kDa
Protein Length	Full Length of Mature Protein
Image	



(Tris-Glycine gel) Discontinuous SDS-PAGE (reduced) with 5% enrichment gel and 15% separation gel.

Shelf Life

The shelf life is related to many factors, storage state, buffer ingredients, storage temperature and the stability of the protein itself.

Generally, the shelf life of liquid form is 6 months at -20°C/-80°C. The shelf life of lyophilized form is 12 months at -20°C/-80°C.