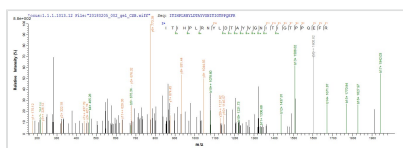




Recombinant Bovine Pregnancy-associated glycoprotein 2 (PAG2)

Product Code	CSB-EP637747BO
Abbreviation	Recombinant Bovine PAG2 protein
Storage	The shelf life is related to many factors, storage state, buffer ingredients, storage temperature and the stability of the protein itself. Generally, the shelf life of liquid form is 6 months at -20°C/-80°C. The shelf life of lyophilized form is 12 months at -20°C/-80°C.
Uniprot No.	Q28057
Product Type	Recombinant Protein
Immunogen Species	Bos taurus (Bovine)
Purity	≥ 85% as determined by SDS-PAGE.
Sequence	KKMKTLRETLREKNLLNFFLEEQAYRLSKNDSKITHPLRNYLDTAYVGNITIGT PPQEFRVVFDTGSANLWVPCITCTSPACYTHKTFNPQNSSSFREVGSPITIFYG SGIIQGFLGSDTVRIGNLVSPEQSFGLSLEEYGFDSLFPDGILGLAFPAMGIETI PIFDNLWSHGAFSEPVFAFYLNNTNKPEGSVVMFGGVDHRYYYKGELNWIPVSQ TSHWQISMNISMNGTVTACSCGCEALLDTGTSMIYGPTKLVNIIHKLMNARL ENSEYVVS CDAVKTLPPVIFNINGIDYPLRPQAYIIKIQN SCSRVFQGGTENS SL NTWILGDIFLRQYFSVFDRKNRRIGLAPAV
Research Area	Signal Transduction
Source	E.coli
Target Names	PAG2
Protein Names	Recommended name: Pregnancy-associated glycoprotein 2 Short name= PAG 2 EC= 3.4.23.-
Expression Region	22-376aa
Notes	Repeated freezing and thawing is not recommended. Store working aliquots at 4°C for up to one week.
Tag Info	N-terminal 6xHis-tagged
Mol. Weight	43.6
Protein Length	Full Length of Mature Protein

Image



Based on the SEQUEST from database of E.coli host and target protein, the LC-MS/MS Analysis result of CSB-EP637747BO could indicate that this peptide derived from E.coli-expressed Bos taurus (Bovine) PAG2.

