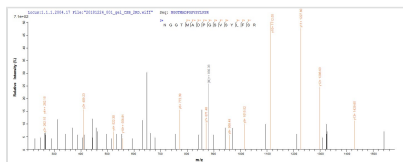




Recombinant Mycobacterium paratuberculosis Probable transcriptional regulatory protein MAP_1030 (MAP_1030)

Product Code	CSB-EP352276MLA
Abbreviation	Recombinant Mycobacterium paratuberculosis MAP_1030 protein
Storage	The shelf life is related to many factors, storage state, buffer ingredients, storage temperature and the stability of the protein itself. Generally, the shelf life of liquid form is 6 months at -20°C/-80°C. The shelf life of lyophilized form is 12 months at -20°C/-80°C.
Uniprot No.	P62039
Storage Buffer	Tris-based buffer,50% glycerol
Product Type	Recombinant Protein
Immunogen Species	Mycobacterium paratuberculosis (strain ATCC BAA-968 / K-10)
Purity	Greater than 85% as determined by SDS-PAGE.
Sequence	MSGHSKWATTKHKKAVIDARRGKMFARLIKNIIEVAARVGGGDPAGNPTLYDAI QKAKKSSVPNENIERARKRGAGEEAGGADWQTITYEGYAPNGVAVLIECLTDN RNRAASEVRVAMTRNGGTMADPGSVSYLFSRKSVVTCEKNGLTEDDILAAVL DAGAEIVEDLGDSFEIICEPTDLVAVRTALQDAGIDYDSAEAGFQPSVTVPLNA DGAQKVMRLVDALEDSDDVQDVWTNADIPDEILAQIEE
Research Area	Others
Source	E.coli
Target Names	MAP_1030
Protein Names	Recommended name: Probable transcriptional regulatory protein MAP_1030
Expression Region	1-250aa
Notes	Repeated freezing and thawing is not recommended. Store working aliquots at 4°C for up to one week.
Tag Info	N-terminal 10xHis-tagged
Mol. Weight	32.8 kDa
Protein Length	Full Length

Image



Based on the SEQUEST from database of E.coli host and target protein, the LC-MS/MS Analysis result of CSB-EP352276MLA could indicate that this peptide derived from E.coli-expressed Mycobacterium paratuberculosis (strain ATCC BAA-968 / K-10) MAP_1030.

