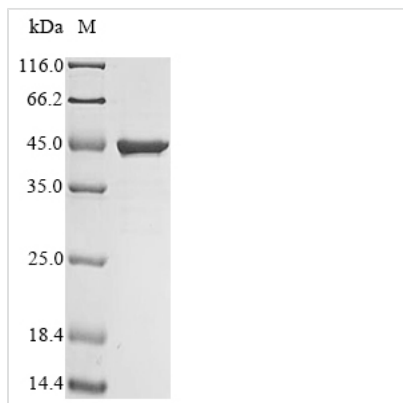




Recombinant Human 60S ribosomal protein L29 (RPL29)

| | |
|--------------------------|---------------------------------------------------------------------------------------------------------------------------------------------------------------------------------------------------------------------------------------------------------------------------------|
| Product Code | CSB-EP020219HU |
| Abbreviation | Recombinant Human RPL29 protein |
| Storage | The shelf life is related to many factors, storage state, buffer ingredients, storage temperature and the stability of the protein itself. Generally, the shelf life of liquid form is 6 months at -20°C/-80°C. The shelf life of lyophilized form is 12 months at -20°C/-80°C. |
| Uniprot No. | P47914 |
| Storage Buffer | Tris-based buffer,50% glycerol |
| Product Type | Recombinant Proteins |
| Immunogen Species | Homo sapiens (Human) |
| Purity | ≥ 90% as determined by SDS-PAGE. |
| Sequence | AKSKNHTTHNQSRKWHRNGIKKPRSQRYESLKGVDPKFLRNMRFAKKHNKK GLKKMQANNAKAMSARAEAIKALVKPKEVKPKIPKGVSRKLDRLAYIAHPKLGK RARARIAKGLRLCRPKAKAKAKAKDQTKAQAAAPASVPAQAPKRTQAPTASE |
| Research Area | Epigenetics and Nuclear Signaling |
| Source | E.coli |
| Target Names | RPL29 |
| Protein Names | Recommended name: 60S ribosomal protein L29 Alternative name(s): Cell surface heparin-binding protein HIP |
| Expression Region | 2-159aa |
| Notes | Repeated freezing and thawing is not recommended. Store working aliquots at 4°C for up to one week. |
| Tag Info | N-terminal GST-tagged |
| Mol. Weight | 44.3 kDa |
| Protein Length | Full Length of Mature Protein |
| Image | |



(Tris-Glycine gel) Discontinuous SDS-PAGE (reduced) with 5% enrichment gel and 15% separation gel.

Shelf Life

The shelf life is related to many factors, storage state, buffer ingredients, storage temperature and the stability of the protein itself.

Generally, the shelf life of liquid form is 6 months at -20°C/-80°C. The shelf life of lyophilized form is 12 months at -20°C/-80°C.