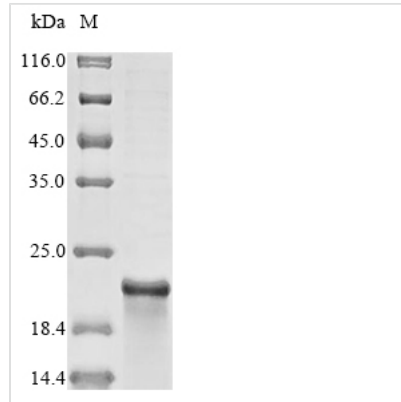




Recombinant Human Microtubule-associated proteins 1A/1B light chain 3C (MAP1LC3C)

Product Code	CSB-EP887153HU
Abbreviation	Recombinant Human MAP1LC3C protein
Storage	The shelf life is related to many factors, storage state, buffer ingredients, storage temperature and the stability of the protein itself. Generally, the shelf life of liquid form is 6 months at -20°C/-80°C. The shelf life of lyophilized form is 12 months at -20°C/-80°C.
Uniprot No.	Q9BXW4
Storage Buffer	Tris-based buffer,50% glycerol
Product Type	Recombinant Proteins
Immunogen Species	Homo sapiens (Human)
Purity	Greater than 85% as determined by SDS-PAGE.
Sequence	MPPPQKIPSVRPFKQRKSLAIRQEEVAGIRAKFPNKIPVVVERYPRETFLPPLD KTKFLVPQELTMTQFLSIIRSRMVLRATEAFYLLVNNKSLVSMASATMAEIYRDYK DEDGFVYMTYASQETFG
Research Area	Cancer
Source	E.coli
Target Names	MAP1LC3C
Protein Names	Recommended name: Microtubule-associated proteins 1A/1B light chain 3C Alternative name(s): Autophagy-related protein LC3 C Autophagy-related ubiquitin-like modifier LC3 C MAP1 light chain 3-like protein 3 MAP1A/MAP1B light chain 3 C
Expression Region	1-126aa
Notes	Repeated freezing and thawing is not recommended. Store working aliquots at 4°C for up to one week.
Tag Info	N-terminal 10xHis-tagged
Mol. Weight	20.7 kDa
Protein Length	Full Length of Mature Protein
Image	



(Tris-Glycine gel) Discontinuous SDS-PAGE (reduced) with 5% enrichment gel and 15% separation gel.

Shelf Life

The shelf life is related to many factors, storage state, buffer ingredients, storage temperature and the stability of the protein itself.

Generally, the shelf life of liquid form is 6 months at -20°C/-80°C. The shelf life of lyophilized form is 12 months at -20°C/-80°C.