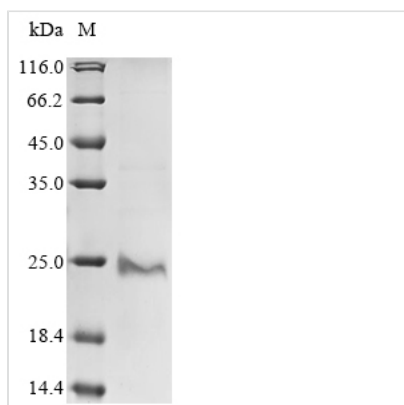




Recombinant Human Protein PML (PML), partial

Product Code	CSB-BP018236HU
Abbreviation	Recombinant Human PML protein, partial
Storage	The shelf life is related to many factors, storage state, buffer ingredients, storage temperature and the stability of the protein itself. Generally, the shelf life of liquid form is 6 months at -20°C/-80°C. The shelf life of lyophilized form is 12 months at -20°C/-80°C.
Uniprot No.	P29590
Product Type	Recombinant Proteins
Immunogen Species	Homo sapiens (Human)
Purity	Greater than 85% as determined by SDS-PAGE.
Sequence	QCQAEAKCPKLLPCLHTLCSGCLASGMQCPICQAPWPLGADTPALDNVFFE SLQRRLSVYRQIVDAQAVCTRCKESADFWCFECEQLLCAKCFEAHQWFLKHE ARPLAELRNQSVREFLDGTRKTNNIFCSNPNHRTPTLTSIYCRGCSKPLCCSC ALLDSSHSELKCDISAEIQQRQEE
Research Area	Cancer
Source	Baculovirus
Target Names	PML
Protein Names	Recommended name: Protein PML Alternative name(s): Promyelocytic leukemia protein RING finger protein 71 Tripartite motif-containing protein 19
Expression Region	59-239aa
Notes	Repeated freezing and thawing is not recommended. Store working aliquots at 4°C for up to one week.
Tag Info	N-terminal 10xHis-tagged and C-terminal Myc-tagged
Mol. Weight	24.5
Protein Length	Partial

Image



(Tris-Glycine gel) Discontinuous SDS-PAGE (reduced) with 5% enrichment gel and 15% separation gel.

Shelf Life

The shelf life is related to many factors, storage state, buffer ingredients,



storage temperature and the stability of the protein itself.
Generally, the shelf life of liquid form is 6 months at -20°C/-80°C. The shelf life of lyophilized form is 12 months at -20°C/-80°C.