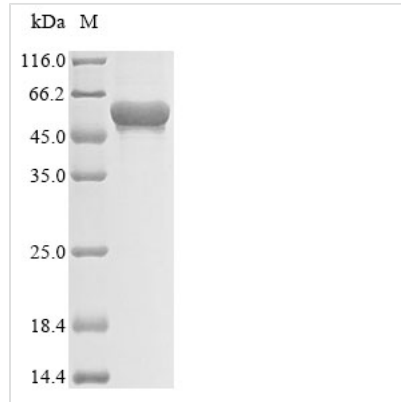




# Recombinant Human Chitinase-3-like protein 2 (CHI3L2)

<b>Product Code</b>	CSB-EP620893HU
<b>Abbreviation</b>	Recombinant Human CHI3L2 protein
<b>Storage</b>	The shelf life is related to many factors, storage state, buffer ingredients, storage temperature and the stability of the protein itself. Generally, the shelf life of liquid form is 6 months at -20°C/-80°C. The shelf life of lyophilized form is 12 months at -20°C/-80°C.
<b>Uniprot No.</b>	Q15782
<b>Product Type</b>	Recombinant Proteins
<b>Immunogen Species</b>	Homo sapiens (Human)
<b>Purity</b>	≥85% (SDS-PAGE)
<b>Sequence</b>	YKLV CYFTNWSQDR QEPGKFTPEN IDPFLCSHLI YSFASIENNK VIIKDKSEVM LYQTINSLKT KNPCLKILLS IGGYLFSGSKG FHPMVDSSTS RLEFINSIIL FLRNHNFDGL DVSWIYPDQK ENTHFTVLIH ELAEAFQKDF TKSTKERLLL TAGVSAGRQM IDNSYQVEKL AKDLDFINLL SFDFHGSWEK PLITGHNSPL SKGWQDRGPS SYYNVEYAVG YWIHKGMPSE KVVMGIPTYG HSFTLASAET TVGAPASGPG AAGPITESSG FLAYYEICQF LKGAKITRLQ DQQVPYAVKG NQWVGYYDDVK SMETKVQFLK NLNLGGAMIW SIDMDDFTGK SCNQGPYPLV QAVKRSLGSL
<b>Source</b>	E.coli
<b>Target Names</b>	CHI3L2
<b>Protein Names</b>	Recommended name: Chitinase-3-like protein 2 Alternative name(s): Chondrocyte protein 39 YKL-39
<b>Expression Region</b>	27-390
<b>Notes</b>	Repeated freezing and thawing is not recommended. Store working aliquots at 4°C for up to one week.
<b>Tag Info</b>	N-terminal 6xHis-SUMO-tagged
<b>Protein Length</b>	Full Length of Mature Protein
<b>Image</b>	



(Tris-Glycine gel) Discontinuous SDS-PAGE (reduced) with 5% enrichment gel and 15% separation gel.

### Shelf Life

The shelf life is related to many factors, storage state, buffer ingredients, storage temperature and the stability of the protein itself.

Generally, the shelf life of liquid form is 6 months at -20°C/-80°C. The shelf life of lyophilized form is 12 months at -20°C/-80°C.