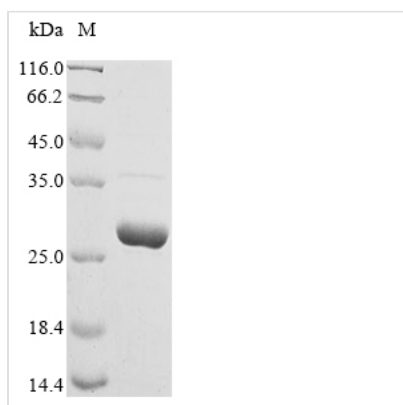




# Recombinant Human Chorionic somatomammotropin hormone (CSH1), Escherichia Coli

<b>Product Code</b>	CSB-EP006053HU
<b>Abbreviation</b>	Recombinant Human CSH1 protein
<b>Storage</b>	The shelf life is related to many factors, storage state, buffer ingredients, storage temperature and the stability of the protein itself. Generally, the shelf life of liquid form is 6 months at -20°C/-80°C. The shelf life of lyophilized form is 12 months at -20°C/-80°C.
<b>Uniprot No.</b>	P01243
<b>Product Type</b>	Recombinant Proteins
<b>Immunogen Species</b>	Homo sapiens (Human)
<b>Purity</b>	>85% (SDS-PAGE)
<b>Sequence</b>	VQTV PLSRLFDHAM LQAHRAHQLA IDTYQEFEET YIPKDQKYSF LHDSQTSFCF SDSIPTPSNM EETQQKSNLE LLRISLLIE SWLEPVRFLR SMFANNLVYD TSDSDDYHLL KDLEEGIQTL MGRLEDGSRR TGQILKQTY S KFDTNSHNHD ALLKNYGLLY CFRKDMDKVE TFLRMVQCRS VEGSCGF
<b>Source</b>	E.coli
<b>Target Names</b>	CSH1
<b>Protein Names</b>	Recommended name: Chorionic somatomammotropin hormone Short name= Choriomammotropin Alternative name(s): Lactogen Placental lactogen Short name= PL
<b>Expression Region</b>	27-217
<b>Notes</b>	Repeated freezing and thawing is not recommended. Store working aliquots at 4°C for up to one week.
<b>Tag Info</b>	N-terminal 6xHis-tagged
<b>Protein Length</b>	Full Length of Mature Protein

## Image



(Tris-Glycine gel) Discontinuous SDS-PAGE (reduced) with 5% enrichment gel and 15% separation gel.



---

## **Shelf Life**

The shelf life is related to many factors, storage state, buffer ingredients, storage temperature and the stability of the protein itself.

Generally, the shelf life of liquid form is 6 months at -20°C/-80°C. The shelf life of lyophilized form is 12 months at -20°C/-80°C.