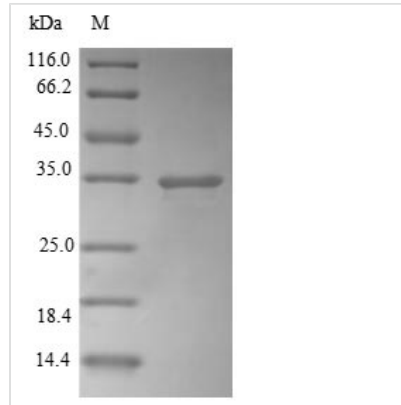




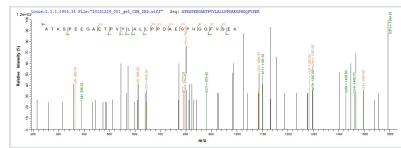
# Recombinant Human Carbonyl reductase [NADPH] 1 (CBR1)

<b>Product Code</b>	CSB-EP004586HUa0
<b>Abbreviation</b>	Recombinant Human CBR1 protein
<b>Storage</b>	The shelf life is related to many factors, storage state, buffer ingredients, storage temperature and the stability of the protein itself. Generally, the shelf life of liquid form is 6 months at -20°C/-80°C. The shelf life of lyophilized form is 12 months at -20°C/-80°C.
<b>Uniprot No.</b>	P16152
<b>Product Type</b>	Recombinant Proteins
<b>Immunogen Species</b>	Homo sapiens (Human)
<b>Purity</b>	Greater than 85% as determined by SDS-PAGE.
<b>Sequence</b>	SSGIHVALVTGGNKGIGLAIVRDLCLRFSGDVVLTARDVTRGQAAVQQLQAEG LSPRFHQLDIDDLQSIRALRDFLRKEYGGLDVLVNNAGIAFKVADPTPFHIQAEV TMKTNFFGTRDVCTELLPLIKPQGRVNVSSIMSVRALKSCSPELQQKFRSETI TEEELVGLMKNKFVEDTKKGVHQKEGWPSAYGVTKIGVTVLSRIHARKLSEQR KGDKILLNACCPGWVRTDMAGPKATKSPEEGAETPVYLALLPPDAEGPHGQF VSEKRVEQW
<b>Source</b>	E.coli
<b>Target Names</b>	CBR1
<b>Protein Names</b>	Recommended name: Carbonyl reductase [NADPH] 1 EC= 1.1.1.184 Alternative name(s): 15-hydroxyprostaglandin dehydrogenase [NADP(+)] EC= 1.1.1.197 NADPH-dependent carbonyl reductase 1 Prostaglandin 9-ketoreductase Prostaglandin-E(2)
<b>Expression Region</b>	2-277aa
<b>Notes</b>	Repeated freezing and thawing is not recommended. Store working aliquots at 4°C for up to one week.
<b>Tag Info</b>	N-terminal 6xHis-tagged
<b>Protein Length</b>	Full Length of Mature Protein

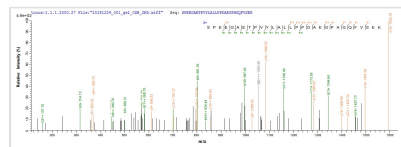
Image



(Tris-Glycine gel) Discontinuous SDS-PAGE (reduced) with 5% enrichment gel and 15% separation gel.



Based on the SEQUEST from database of E.coli host and target protein, the LC-MS/MS Analysis result of CSB-EP004586HUa0 could indicate that this peptide derived from E.coli-expressed Homo sapiens (Human) CBR1.



Based on the SEQUEST from database of E.coli host and target protein, the LC-MS/MS Analysis result of CSB-EP004586HUa0 could indicate that this peptide derived from E.coli-expressed Homo sapiens (Human) CBR1.

## Shelf Life

The shelf life is related to many factors, storage state, buffer ingredients, storage temperature and the stability of the protein itself.

Generally, the shelf life of liquid form is 6 months at -20°C/-80°C. The shelf life of lyophilized form is 12 months at -20°C/-80°C.