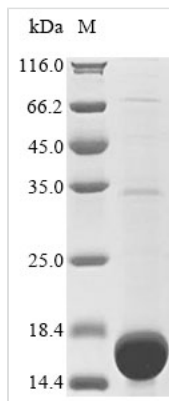




# Recombinant Rat Heparanase (Hpse), partial

|                          |   |
|--------------------------|---|
| <b>Product Code</b>      | CSB-EP010716RA  |
| <b>Abbreviation</b>      | Recombinant Rat Hpse protein, partial   |
| <b>Storage</b>           | The shelf life is related to many factors, storage state, buffer ingredients, storage temperature and the stability of the protein itself. Generally, the shelf life of liquid form is 6 months at -20°C/-80°C. The shelf life of lyophilized form is 12 months at -20°C/-80°C. |
| <b>Uniprot No.</b>       | Q71RP1  |
| <b>Product Type</b>      | Recombinant Proteins  |
| <b>Immunogen Species</b> | Rattus norvegicus (Rat)   |
| <b>Purity</b>            | ≥ 90% as determined by SDS-PAGE.  |
| <b>Sequence</b>          | KDVVDLEFYTKRLFQSVSPSFLSITIDASLATDPRFLTFLGSPRLRALARGLSPA<br>YLRFGGKTDFLIFDPNKE   |
| <b>Research Area</b>     | Cancer  |
| <b>Source</b>            | E.coli  |
| <b>Target Names</b>      | Hpse  |
| <b>Protein Names</b>     | Recommended name: Heparanase EC= 3.2.-.- Alternative name(s): Endo-glucuronidase Cleaved into the following 2 chains: 1. Heparanase 8 kDa subunit<br>2. Heparanase 50 kDa subunit   |
| <b>Expression Region</b> | 29-102aa  |
| <b>Notes</b>             | Repeated freezing and thawing is not recommended. Store working aliquots at 4°C for up to one week.   |
| <b>Tag Info</b>          | N-terminal 10xHis-tagged and C-terminal Myc-tagged  |
| <b>Mol. Weight</b>       | 15.8 kDa  |
| <b>Protein Length</b>    | Partial   |

## Image



(Tris-Glycine gel) Discontinuous SDS-PAGE (reduced) with 5% enrichment gel and 15% separation gel.

## Shelf Life

The shelf life is related to many factors, storage state, buffer ingredients, storage temperature and the stability of the protein itself.



Generally, the shelf life of liquid form is 6 months at -20°C/-80°C. The shelf life of lyophilized form is 12 months at -20°C/-80°C.