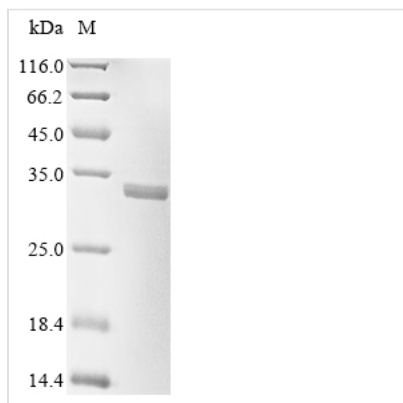




Recombinant Human Mitochondrial cardiolipin hydrolase (PLD6)

| | |
|--------------------------|---|
| Product Code | CSB-EP836649HUe1 |
| Abbreviation | Recombinant Human PLD6 protein |
| Storage | The shelf life is related to many factors, storage state, buffer ingredients, storage temperature and the stability of the protein itself. Generally, the shelf life of liquid form is 6 months at -20°C/-80°C. The shelf life of lyophilized form is 12 months at -20°C/-80°C. |
| Uniprot No. | Q8N2A8 |
| Product Type | Recombinant Proteins |
| Immunogen Species | Homo sapiens (Human) |
| Purity | ≥ 85% as determined by SDS-PAGE. |
| Sequence | MGRLSWQVAAAAAVGLALTLEALPWVLRWLRSRRRRPRREALFFPSQVTCTE ALLRAPGAELAELPEGPCGLPHGESALSRLLRALLAARASLDLCLFAFSSPQL GRAVQLLHQRGVVRVVTDCDYMALNGSQIGLLRKAGIQVRHDQDPGYMHH KFAIVDKRVLITGSLNWTTQAIQNNRENVLITEDDEYVRLFLEEFERIWEQFNPT KYTFFPPKKSHGSCAPPVSRAGGRLLSWHRTCGTSSSESQT |
| Research Area | Epigenetics and Nuclear Signaling |
| Source | E.coli |
| Target Names | PLD6 |
| Expression Region | 1-252aa |
| Notes | Repeated freezing and thawing is not recommended. Store working aliquots at 4°C for up to one week. |
| Tag Info | Tag-Free |
| Mol. Weight | 28.3 kDa |
| Protein Length | Full Length |

Image



(Tris-Glycine gel) Discontinuous SDS-PAGE (reduced) with 5% enrichment gel and 15% separation gel.



Shelf Life

The shelf life is related to many factors, storage state, buffer ingredients, storage temperature and the stability of the protein itself.

Generally, the shelf life of liquid form is 6 months at -20°C/-80°C. The shelf life of lyophilized form is 12 months at -20°C/-80°C.