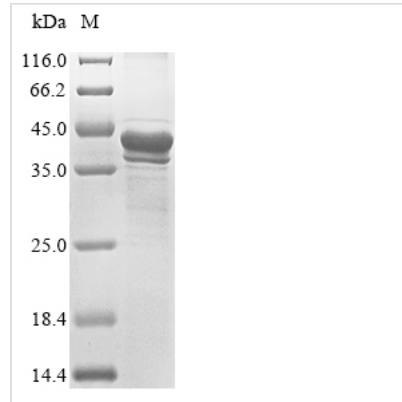




# Recombinant *Loxosceles intermedia* Phospholipase D LiSicTox-alphaA1a

<b>Product Code</b>	CSB-EP317615LRA
<b>Abbreviation</b>	Recombinant <i>Loxosceles intermedia</i> Phospholipase D LiSicTox-alphaA1a protein
<b>Storage</b>	The shelf life is related to many factors, storage state, buffer ingredients, storage temperature and the stability of the protein itself. Generally, the shelf life of liquid form is 6 months at -20°C/-80°C. The shelf life of lyophilized form is 12 months at -20°C/-80°C.
<b>Uniprot No.</b>	P0CE80
<b>Product Type</b>	Recombinant Proteins
<b>Immunogen Species</b>	<i>Loxosceles intermedia</i> (Brown spider)
<b>Purity</b>	Greater than 85% as determined by SDS-PAGE.
<b>Sequence</b>	AGNRRPIWIMGHMVNAIGQIDFVNLGANSIETDVSFDDNANPEYTYHGIPCDC GRNCKKYENFNDFLKGLRSATTPGNSKYQEKLVLVVF DLKTGSLYDNQANDA GKKLAKNLLQHYWNNNGNGGRAYIVLSIPDLNHYPLIKGFKDQLTKDGHPELM DKVGHDFSGNDDIGDVGKAYKKAGITGHIWQSDGITNCLPRGLSRVNAAVANR DSANGFINKVYYWTVDKRSTTRDALDAGVDGIMTNPDPVITDVLNEAAYKKKF RVATYDENPWVTFKK
<b>Research Area</b>	Others
<b>Source</b>	E.coli
<b>Target Names</b>	N/A
<b>Protein Names</b>	Recommended name: Sphingomyelin phosphodiesterase D LiSicTox-alphaA1a Alternative name(s): Dermonecrotic protein 1 LiRecDT1 Sphingomyelin phosphodiesterase D 1 Short name= SMD 1 Short name= SMase D 1 Short name= Sphingomyelin
<b>Expression Region</b>	27-306aa
<b>Notes</b>	Repeated freezing and thawing is not recommended. Store working aliquots at 4°C for up to one week.
<b>Tag Info</b>	N-terminal 10xHis-tagged and C-terminal Myc-tagged
<b>Mol. Weight</b>	38.7 kDa
<b>Protein Length</b>	Full Length of Mature Protein
<b>Image</b>	



(Tris-Glycine gel) Discontinuous SDS-PAGE (reduced) with 5% enrichment gel and 15% separation gel.

### Shelf Life

The shelf life is related to many factors, storage state, buffer ingredients, storage temperature and the stability of the protein itself.

Generally, the shelf life of liquid form is 6 months at -20°C/-80°C. The shelf life of lyophilized form is 12 months at -20°C/-80°C.