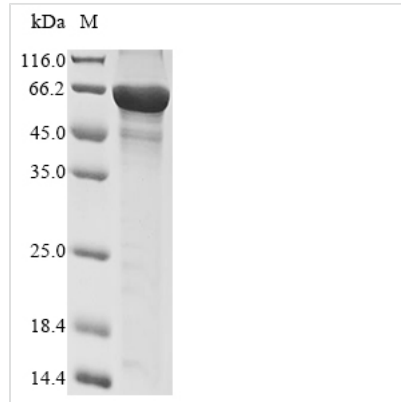




Recombinant Human Metabotropic glutamate receptor 5 (GRM5), partial

Product Code	CSB-EP009935HU
Abbreviation	Recombinant Human GRM5 protein, partial
Storage	The shelf life is related to many factors, storage state, buffer ingredients, storage temperature and the stability of the protein itself. Generally, the shelf life of liquid form is 6 months at -20°C/-80°C. The shelf life of lyophilized form is 12 months at -20°C/-80°C.
Uniprot No.	P41594
Product Type	Recombinant Proteins
Immunogen Species	Homo sapiens (Human)
Purity	≥ 85% as determined by SDS-PAGE.
Sequence	SSERRVVAHMPGDIIGALFSVHHQPTVDKVERKCGAVREQYGIQRVEAMLH TLERINSPTLLPNITLGCEIRDSCWHSVALEQSIEFIRDLSISSEEEGLVRCV DGSSSSFRSKKPIVGVIGPGSSSVAIQVQNLLQLFNIPQIAYSATSMDLSDKTLF KYFMRVVPDAQQARAMVDIVKRYNWTYVSAVHTEGNYGESGMEAFKDMA KEGICIAHSYKIYSNAGEQSFDKLLKLTSHLPKARVVACFCEGMTVRGLLMAM RRLGLAGEFLLLGS DGWADRYDVT DGYQREAVGGITIKLQSPDVKWFDDYYL KLRPETNHRNPWFQEFWQHRFQCRLEGFPQENSKYNKTCNSSLTLKTHHVQ DSKMGFVINAIYSMAYGLHNMQMSLCPGYAGLCDAMKPIDGRKLLLESLMKTNF TGVSGDTILFDENGDSPGRYEIMNFKEMGKDYFDYINVGSWDNGELKMDDDE VWSKKSNIIRSVCEPCEKGQIKVIRKGEVSCCWTCPTCKENEYVFDEYTCKA CQLGSWPTDDLTGCDLIPVQYLRWGDPEP
Research Area	Cancer
Source	E.coli
Target Names	GRM5
Protein Names	Recommended name: Metabotropic glutamate receptor 5 Short name= mGluR5
Expression Region	22-580aa
Notes	Repeated freezing and thawing is not recommended. Store working aliquots at 4°C for up to one week.
Tag Info	N-terminal 10xHis-tagged and C-terminal Myc-tagged
Mol. Weight	70.6 kDa
Protein Length	Partial
Image	



(Tris-Glycine gel) Discontinuous SDS-PAGE (reduced) with 5% enrichment gel and 15% separation gel.

Shelf Life

The shelf life is related to many factors, storage state, buffer ingredients, storage temperature and the stability of the protein itself.

Generally, the shelf life of liquid form is 6 months at -20°C/-80°C. The shelf life of lyophilized form is 12 months at -20°C/-80°C.