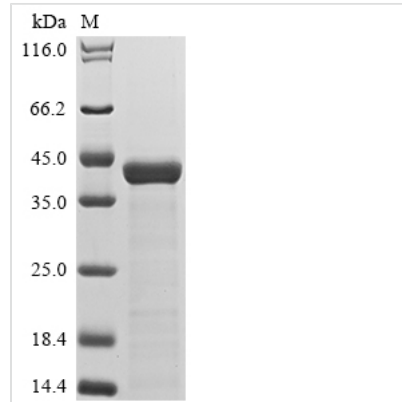




Recombinant *Saccharomyces cerevisiae* Saccharopepsin (PEP4)

Product Code	CSB-EP362092SVG
Abbreviation	Recombinant <i>Saccharomyces cerevisiae</i> PEP4 protein
Storage	The shelf life is related to many factors, storage state, buffer ingredients, storage temperature and the stability of the protein itself. Generally, the shelf life of liquid form is 6 months at -20°C/-80°C. The shelf life of lyophilized form is 12 months at -20°C/-80°C.
Uniprot No.	P07267
Product Type	Recombinant Proteins
Immunogen Species	<i>Saccharomyces cerevisiae</i> (strain ATCC 204508 / S288c) (Baker's yeast)
Purity	≥ 85% as determined by SDS-PAGE.
Sequence	GGHDVPLTNYLNAQYYTDITLGTPPQNFKVILDTGSSNLWVPSNECGSLACFL HSKYDHEASSSYKANGTEFAIQYGTGSLEGYISQDTLSIGDLTIPKQDFAEATS EPGLTFAFGKFDGILGLGYDTISVDKVVPPFYNAIQDILLDEKRFAFYLGDTSK DTENGGATFGGIDESKFKGDITWLPVRRKAYWEVKFEGIGLGDEYAELESHG AAIDTGTSLITLPSGLAEMINAEIGAKKGWTGQYTLDCNTRDNLPLIFNFNGYN FTIGPYDYTLEVSGSCISAITPMDFPEPVGPLAIVGDAFLRKYYSIYDLGNNAVG LAKAI
Research Area	Cell Biology
Source	E.coli
Target Names	PEP4
Protein Names	Recommended name: Saccharopepsin EC= 3.4.23.25 Alternative name(s): Aspartate protease Short name= Proteinase A Carboxypeptidase Y-deficient protein 4 Proteinase YSCA
Expression Region	77-405aa
Notes	Repeated freezing and thawing is not recommended. Store working aliquots at 4°C for up to one week.
Tag Info	N-terminal 10xHis-tagged
Mol. Weight	39.4 kDa
Protein Length	Full Length of Mature Protein
Image	



(Tris-Glycine gel) Discontinuous SDS-PAGE (reduced) with 5% enrichment gel and 15% separation gel.

Shelf Life

The shelf life is related to many factors, storage state, buffer ingredients, storage temperature and the stability of the protein itself.

Generally, the shelf life of liquid form is 6 months at -20°C/-80°C. The shelf life of lyophilized form is 12 months at -20°C/-80°C.