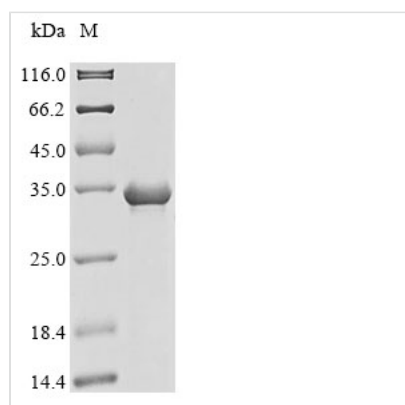




# Recombinant Human Serine protease 1 (PRSS1)

<b>Product Code</b>	CSB-EP018811HU
<b>Abbreviation</b>	Recombinant Human PRSS1 protein
<b>Storage</b>	The shelf life is related to many factors, storage state, buffer ingredients, storage temperature and the stability of the protein itself. Generally, the shelf life of liquid form is 6 months at -20°C/-80°C. The shelf life of lyophilized form is 12 months at -20°C/-80°C.
<b>Uniprot No.</b>	P07477
<b>Product Type</b>	Recombinant Proteins
<b>Immunogen Species</b>	Homo sapiens (Human)
<b>Purity</b>	Greater than $\geq 85\%$ as determined by SDS-PAGE.
<b>Sequence</b>	IVGGYNCEENSVPYQVSLNSGYHFCGGSLINEQWVVSAGHCYKSRIQVRLGE HNIEVLEGNEQFINAAKIIRHPQYDRKTLNNDIMLIKLSRAVINARVSTISLPTAP PATGTKCLISGWGNTASSGADYPDELQCLDAPVLSQAKCEASYPGKITSNMFC VGFLEGGKDSCQGDSSGPPVVCNGQLQGVVSWGDGCAQKNKPGVYTKVYNY VKWIKNTIAANS
<b>Research Area</b>	Metabolism
<b>Source</b>	E.coli
<b>Target Names</b>	PRSS1
<b>Protein Names</b>	Recommended name: Trypsin-1 EC= 3.4.21.4 Alternative name(s): Beta-trypsin Cationic trypsinogen Serine protease 1 Trypsin I Cleaved into the following 2 chains: 1. Alpha-trypsin chain 1 2. Alpha-trypsin chain 2
<b>Expression Region</b>	24-247aa
<b>Notes</b>	Repeated freezing and thawing is not recommended. Store working aliquots at 4°C for up to one week.
<b>Tag Info</b>	N-terminal 10xHis-tagged and C-terminal Myc-tagged
<b>Mol. Weight</b>	31.6 kDa
<b>Protein Length</b>	Full Length of Mature Protein

## Image



(Tris-Glycine gel) Discontinuous SDS-PAGE (reduced) with 5% enrichment gel and 15% separation gel.



## Shelf Life

The shelf life is related to many factors, storage state, buffer ingredients, storage temperature and the stability of the protein itself.

Generally, the shelf life of liquid form is 6 months at -20°C/-80°C. The shelf life of lyophilized form is 12 months at -20°C/-80°C.