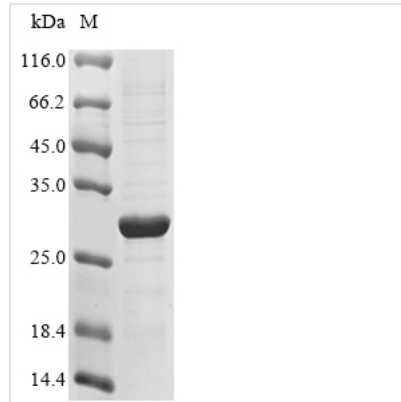




# Recombinant Human Interleukin-20 receptor subunit beta (IL20RB), partial

<b>Product Code</b>	CSB-EP740921HU
<b>Abbreviation</b>	Recombinant Human IL20RB protein, partial
<b>Storage</b>	The shelf life is related to many factors, storage state, buffer ingredients, storage temperature and the stability of the protein itself. Generally, the shelf life of liquid form is 6 months at -20°C/-80°C. The shelf life of lyophilized form is 12 months at -20°C/-80°C.
<b>Uniprot No.</b>	Q6UXL0
<b>Product Type</b>	Recombinant Proteins
<b>Immunogen Species</b>	Homo sapiens (Human)
<b>Purity</b>	Greater than 85% as determined by SDS-PAGE.
<b>Sequence</b>	DEVAILPAPQNLSVLSTNMKHELLMWSPVIAPGETVYYSVEYQGEYESLYTSHI WIPSSWCSLTEGPECDVTDDITATVPYNLRVVRATLGSQTSAWSILKHPFNRNS TILTRPGMEITKDG FHLVIELEDLGPQFEFLVAYWRREPGAEEHVKMVRSGGIP VHLETMEPGAAYCVKAQTFVKAIGRYSAFSQTECVEVQGEAIPL
<b>Research Area</b>	Cancer
<b>Source</b>	E.coli
<b>Target Names</b>	IL20RB
<b>Protein Names</b>	Recommended name: Interleukin-20 receptor subunit beta Short name= IL-20 receptor subunit beta Short name= IL-20R-beta Short name= IL-20RB Alternative name(s): IL-20R2
<b>Expression Region</b>	30-233aa
<b>Notes</b>	Repeated freezing and thawing is not recommended. Store working aliquots at 4°C for up to one week.
<b>Tag Info</b>	N-terminal 6xHis-tagged
<b>Mol. Weight</b>	26.9 kDa
<b>Protein Length</b>	Partial

Image



(Tris-Glycine gel) Discontinuous SDS-PAGE (reduced) with 5% enrichment gel and 15% separation gel.

### Shelf Life

The shelf life is related to many factors, storage state, buffer ingredients, storage temperature and the stability of the protein itself.

Generally, the shelf life of liquid form is 6 months at -20°C/-80°C. The shelf life of lyophilized form is 12 months at -20°C/-80°C.