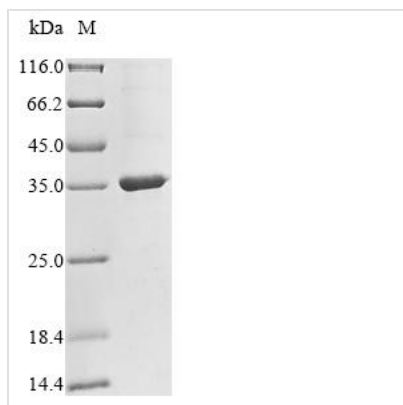




Recombinant Human Ceruloplasmin (CP), partial

Product Code	CSB-EP005874HU
Abbreviation	Recombinant Human CP protein, partial
Storage	The shelf life is related to many factors, storage state, buffer ingredients, storage temperature and the stability of the protein itself. Generally, the shelf life of liquid form is 6 months at -20°C/-80°C. The shelf life of lyophilized form is 12 months at -20°C/-80°C.
Uniprot No.	P00450
Product Type	Recombinant Proteins
Immunogen Species	Homo sapiens (Human)
Purity	Greater than 85% as determined by SDS-PAGE.
Sequence	ILGPQLHADVGDVKVIIFKNMATRPYSIHAHGVQTESSTVTPTLPGETLTYVWKI PERSGAGTEDSACIPWAYYSTVDQVKDLYSGLIGPLIVCRRPYLKVFNPRRKLK FALLFLVFDENESWYLDDNIKTYS DHPEKVNKDDEEFIESNKMHAINGRMFGN LQGLTMHVGDEVNWYLMGMGNEIDLHTVHFHGHHSFQYKHRGVYSSDVFDIFP GTYTLEMPRTPGIWLLHCHVTDHIHAGM
Research Area	Signal Transduction
Source	E.coli
Target Names	CP
Protein Names	Recommended name: Ceruloplasmin EC= 1.16.3.1 Alternative name(s): Ferroxidase
Expression Region	807-1050aa
Notes	Repeated freezing and thawing is not recommended. Store working aliquots at 4°C for up to one week.
Tag Info	N-terminal 10xHis-tagged and C-terminal Myc-tagged
Mol. Weight	35.4 kDa
Protein Length	Partial

Image



(Tris-Glycine gel) Discontinuous SDS-PAGE (reduced) with 5% enrichment gel and 15% separation gel.



Shelf Life

The shelf life is related to many factors, storage state, buffer ingredients, storage temperature and the stability of the protein itself.

Generally, the shelf life of liquid form is 6 months at -20°C/-80°C. The shelf life of lyophilized form is 12 months at -20°C/-80°C.