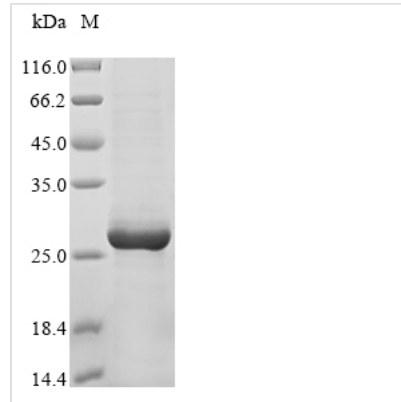




Recombinant Lassa virus Pre-glycoprotein polyprotein GP complex (GPC), partial

Product Code	CSB-EP322925LCP1
Abbreviation	Recombinant Lassa virus GPC protein, partial
Storage	The shelf life is related to many factors, storage state, buffer ingredients, storage temperature and the stability of the protein itself. Generally, the shelf life of liquid form is 6 months at -20°C/-80°C. The shelf life of lyophilized form is 12 months at -20°C/-80°C.
Uniprot No.	P17332
Product Type	Recombinant Proteins
Immunogen Species	Lassa virus(strain GA391)(LASV)
Purity	Greater than 90% as determined by SDS-PAGE.
Sequence	LIYKGTIELQTLELNMETLNMTMPLSCTKNNSHHYIRVGNETGLELTLTNTSILN HKFCNLSDAHKRNLVDHSLMSIISTFHLSIPNFNQYEAMSCDFNGGKITVQYNL SHSFAVDAAGHCGTLANGVLQTFMRMAWGGSYIALDSGRGNWDCIMTSYQY LIIQNTTWDDHCQFSRPSPIGYLGLLSQRTRDIYISRLL
Research Area	Signal Transduction
Source	E.coli
Target Names	GPC
Protein Names	Recommended name: Pre-glycoprotein polyprotein GP complex Short name= Pre-GP-CCleaved into the following 3 chains: 1. Stable signal peptide Short name= 2. SSP 3. Glycoprotein G1 Short name= 4. GP1 5. Glycoprotein G2 Short
Expression Region	59-258aa
Notes	Repeated freezing and thawing is not recommended. Store working aliquots at 4°C for up to one week.
Tag Info	N-terminal 10xHis-tagged and C-terminal Myc-tagged
Mol. Weight	27.7 kDa
Protein Length	Partial
Image	



(Tris-Glycine gel) Discontinuous SDS-PAGE (reduced) with 5% enrichment gel and 15% separation gel.

Shelf Life

The shelf life is related to many factors, storage state, buffer ingredients, storage temperature and the stability of the protein itself.

Generally, the shelf life of liquid form is 6 months at -20°C/-80°C. The shelf life of lyophilized form is 12 months at -20°C/-80°C.