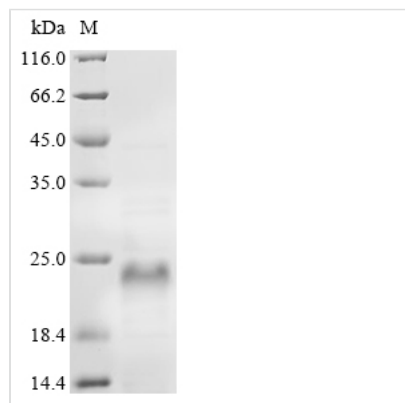




# Recombinant Human Nascent polypeptide-associated complex subunit alpha (NACA)

<b>Product Code</b>	CSB-YP623830HUb0
<b>Abbreviation</b>	Recombinant Human NACA protein
<b>Storage</b>	The shelf life is related to many factors, storage state, buffer ingredients, storage temperature and the stability of the protein itself. Generally, the shelf life of liquid form is 6 months at -20°C/-80°C. The shelf life of lyophilized form is 12 months at -20°C/-80°C.
<b>Uniprot No.</b>	Q13765
<b>Product Type</b>	Recombinant Proteins
<b>Immunogen Species</b>	Homo sapiens (Human)
<b>Purity</b>	≥ 90% as determined by SDS-PAGE.
<b>Sequence</b>	MPGEATETVPATEQELPQPQAETGSGTESDSDESVPPELEEQDSTQATTQQAQ LAAAAEIDEEPVSKAKQSRSEKKARKAMSKLGLRQVTGVTRVTIRKSKNILFVIT KPDVYKSPASDTYIVFGEAKIEDLSQQAQLAAAEKFKVQGEAVSNIQENTQTPT VQEESEEEVEDETGVEVKDIELVMSQANVSRAKAVRALKNNSNDIVNAIMELT M
<b>Research Area</b>	Epigenetics and Nuclear Signaling
<b>Source</b>	Yeast
<b>Target Names</b>	NACA
<b>Expression Region</b>	1-215aa
<b>Notes</b>	Repeated freezing and thawing is not recommended. Store working aliquots at 4°C for up to one week.
<b>Tag Info</b>	N-terminal 10xHis-tagged
<b>Mol. Weight</b>	25.9
<b>Protein Length</b>	Full Length

## Image



(Tris-Glycine gel) Discontinuous SDS-PAGE (reduced) with 5% enrichment gel and 15% separation gel.



## Shelf Life

The shelf life is related to many factors, storage state, buffer ingredients, storage temperature and the stability of the protein itself.

Generally, the shelf life of liquid form is 6 months at -20°C/-80°C. The shelf life of lyophilized form is 12 months at -20°C/-80°C.