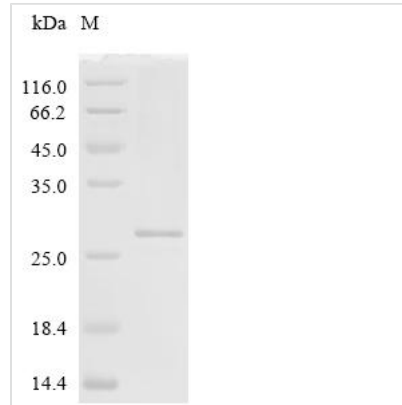




# Recombinant Human Erythroferrone (ERFE), partial

<b>Product Code</b>	CSB-YP677939HU1
<b>Relevance</b>	Iron-regulatory hormone that acts as an erythroid regulator after hemorrhage: produced by erythroblasts following blood loss and mediates suppression of hepcidin (HAMP) expression in the liver, thereby promoting increased iron absorption and mobilization from stores. Promotes lipid uptake into adipocytes and hepatocytes via transcriptional up-regulation of genes involved in fatty acid uptake (By similarity).
<b>Abbreviation</b>	Recombinant Human ERFE protein, partial
<b>Storage</b>	The shelf life is related to many factors, storage state, buffer ingredients, storage temperature and the stability of the protein itself. Generally, the shelf life of liquid form is 6 months at -20°C/-80°C. The shelf life of lyophilized form is 12 months at -20°C/-80°C.
<b>Uniprot No.</b>	Q4G0M1
<b>Product Type</b>	Recombinant Proteins
<b>Immunogen Species</b>	Homo sapiens (Human)
<b>Purity</b>	Greater than 90% as determined by SDS-PAGE.
<b>Sequence</b>	PGPRAPRVEAAFLCRLRRDALVERRALHELGVYYLPDAEGAFRRGPGNLNLS GQYRAPVAGFYALAATLHVALGEPPIRGPPRPRDHLRLLLICIQSRCQRNASLE AIMGLESSSELTISVNGVLYLQMGQWTSVFLDNASGCSLTVRSGSHFSAVLL GV
<b>Research Area</b>	Others
<b>Source</b>	Yeast
<b>Target Names</b>	ERFE
<b>Protein Names</b>	Recommended name: Erythroferrone
<b>Expression Region</b>	195-354aa
<b>Notes</b>	Repeated freezing and thawing is not recommended. Store working aliquots at 4°C for up to one week.
<b>Tag Info</b>	N-terminal 6xHis-tagged
<b>Mol. Weight</b>	19.5
<b>Protein Length</b>	Partial
<b>Image</b>	



(Tris-Glycine gel) Discontinuous SDS-PAGE (reduced) with 5% enrichment gel and 15% separation gel.

### Shelf Life

The shelf life is related to many factors, storage state, buffer ingredients, storage temperature and the stability of the protein itself.

Generally, the shelf life of liquid form is 6 months at -20°C/-80°C. The shelf life of lyophilized form is 12 months at -20°C/-80°C.