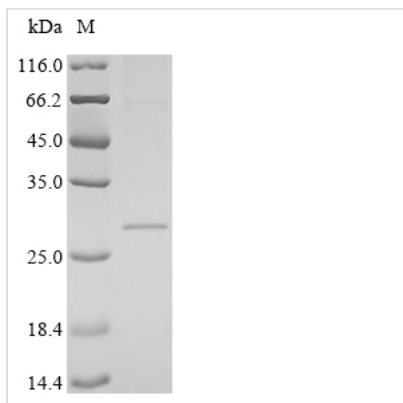




# Recombinant Lassa virus Pre-glycoprotein polyprotein GP complex (GPC), partial

<b>Product Code</b>	CSB-BP322925LCP1
<b>Abbreviation</b>	Recombinant Lassa virus GPC protein, partial
<b>Storage</b>	The shelf life is related to many factors, storage state, buffer ingredients, storage temperature and the stability of the protein itself. Generally, the shelf life of liquid form is 6 months at -20°C/-80°C. The shelf life of lyophilized form is 12 months at -20°C/-80°C.
<b>Uniprot No.</b>	P17332
<b>Product Type</b>	Recombinant Proteins
<b>Immunogen Species</b>	Lassa virus (strain GA391) (LASV)
<b>Purity</b>	Greater than 85% as determined by SDS-PAGE.
<b>Sequence</b>	LIYKGTIELQTLELNMETLNMTMPLSCTKNNSHHYIRVGNETGLELTLTNTSILN HKFCNLSDAHKRNLVDHSLMSIISTFHLSIPNFNQYEAMSCDFNGGKITVQYNL SHSFAVDAAGHCGTLANGVLQTFMRMAWGGSYIALDSGRGNWDCIMTSYQY LIIQNTTWDDHCQFSRPSPIGYLGLLSQRTRDIYISRRL
<b>Research Area</b>	Signal Transduction
<b>Source</b>	Baculovirus
<b>Target Names</b>	GPC
<b>Protein Names</b>	Recommended name: Pre-glycoprotein polyprotein GP complex Short name= Pre-GP-CCleaved into the following 3 chains: 1. Stable signal peptide Short name= 2. SSP 3. Glycoprotein G1 Short name= 4. GP1 5. Glycoprotein G2 Short
<b>Expression Region</b>	59-258aa
<b>Notes</b>	Repeated freezing and thawing is not recommended. Store working aliquots at 4°C for up to one week.
<b>Tag Info</b>	N-terminal 10xHis-tagged and C-terminal Myc-tagged
<b>Mol. Weight</b>	26.6
<b>Protein Length</b>	Partial
<b>Image</b>	



(Tris-Glycine gel) Discontinuous SDS-PAGE (reduced) with 5% enrichment gel and 15% separation gel.

### Shelf Life

The shelf life is related to many factors, storage state, buffer ingredients, storage temperature and the stability of the protein itself.

Generally, the shelf life of liquid form is 6 months at -20°C/-80°C. The shelf life of lyophilized form is 12 months at -20°C/-80°C.