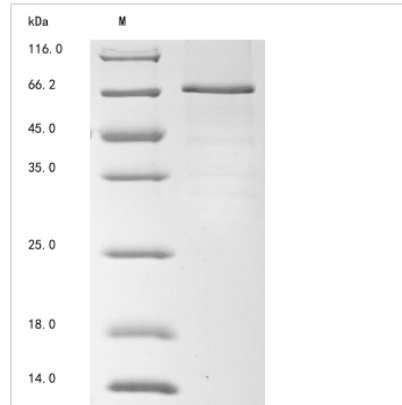




Recombinant Mouse Complement factor I (Cfi)

| | |
|--------------------------|---|
| Product Code | CSB-BP005279MO |
| Abbreviation | Recombinant Mouse Cfi protein |
| Storage | The shelf life is related to many factors, storage state, buffer ingredients, storage temperature and the stability of the protein itself. Generally, the shelf life of liquid form is 6 months at -20°C/-80°C. The shelf life of lyophilized form is 12 months at -20°C/-80°C. |
| Uniprot No. | Q61129 |
| Product Type | Recombinant Proteins |
| Immunogen Species | Mus musculus (Mouse) |
| Purity | ≥ 85% as determined by SDS-PAGE. |
| Sequence | RSPSASDLPQEELVDQKCLLQKYTHRSCNKVFCQPWQRCIEGTCICKLPYQC PRAGTPVCAMNGRSYPTYCHQKSFELHPEIKFSHNGTCAAEGKFNVSLIYGR TKTEGLVQVKLVDQDERMFICKNSWSMAEANVACVDLGFPLGVDRDIQGSFNIS GNLHINDTECLHVHCRGVETSLAECAFTKRRELSNGLAGVVCYKQDADFPTS LSFQCVNGKHIPQEKACNGVNDQDQSDDELCKGCRGNASLCKSGVCIPDQ YKNGEVDCITGEDESRCEDRQQNIPKGLARSAQGEAEIETEEMLTTPGM DNERKRIKSLLPKLSCGVKRNTHTRRKRIVIGGKPANVGDYPWQVAIKDQQRIT CGGIYIGGCWILTAHCVRPSRAHSYQVWTALLDWLKPNSQLGIQTVKRIVIH EKYNGATFQNDIALIEMKMHTGKKECELPNSVPACVPWSPYLFQPNDRCIISG WGRGKDNQKVYSLRWGEVDLIGNCSQFYPPDRYYEKEMQCAGTRDGSIDACK GDSGGPLVCEDINNVTYVWGVSWGENCGKPEFPVYTRVANYFDWISYHVG RSLVSQHNH |
| Research Area | Epigenetics and Nuclear Signaling |
| Source | Baculovirus |
| Target Names | Cfi |
| Protein Names | Recommended name: Complement factor I EC= 3.4.21.45 Alternative name(s): C3B/C4B inactivator Cleaved into the following 2 chains: 1. Complement factor I heavy chain 2. Complement factor I light chain |
| Expression Region | 19-603aa |
| Notes | Repeated freezing and thawing is not recommended. Store working aliquots at 4°C for up to one week. |
| Tag Info | N-terminal 10xHis-tagged and C-terminal Myc-tagged |
| Mol. Weight | 69.2 |
| Protein Length | Full Length of Mature Protein |
| Image | |



(Tris-Glycine gel) Discontinuous SDS-PAGE (reduced) with 5% enrichment gel and 15% separation gel.

Shelf Life

The shelf life is related to many factors, storage state, buffer ingredients, storage temperature and the stability of the protein itself.

Generally, the shelf life of liquid form is 6 months at -20°C/-80°C. The shelf life of lyophilized form is 12 months at -20°C/-80°C.