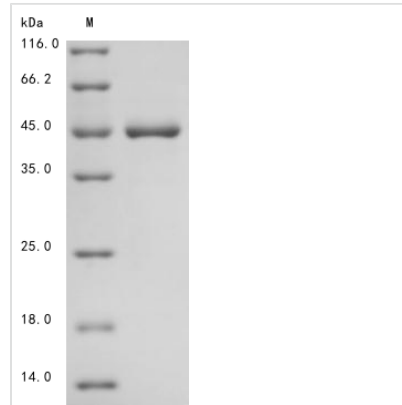




Recombinant Human Keratin, type I cytoskeletal 19 (KRT19)

Product Code	CSB-BP012534HU
Abbreviation	Recombinant Human KRT19 protein
Storage	The shelf life is related to many factors, storage state, buffer ingredients, storage temperature and the stability of the protein itself. Generally, the shelf life of liquid form is 6 months at -20°C/-80°C. The shelf life of lyophilized form is 12 months at -20°C/-80°C.
Uniprot No.	P08727
Product Type	Recombinant Proteins
Immunogen Species	Homo sapiens (Human)
Purity	Greater than 85% as determined by SDS-PAGE.
Sequence	MTSYSYRQSSATSSFGGLGGGSVRFPGVAFRAPSIIHGGSGGRGVS SVSSAR FVSSSSSGAYGGGYGGVLTASDGLLAGNEKLTMQNLNDRLASYLDKVRAL EANGELVKIRDWYQKQGGPSPRDYSHYYTTIQDLRDKILGATIENSRI VLQIDNARLAADDFRTKFETEQALRMSVEADINGLRRVLDLTLARTD LEMQIEGLKEELAYLKKNHEEEI STLRGQVGGQVSVEVDSAPGTDLAKILSDMRSQYEVM AEQNRKDAEAWFTSRTEELNREVAGHTEQLQMSRSEVTDLRRTLQ GLEIELQSQLSMKAAL EDTLAETEARFGAQLAHIQALISGIEAQLGDVRADSERQ NQEYQRLMDIKSRLEQE IATYRSLLLEGQEDHYN NLSASKVL
Research Area	Signal Transduction
Source	Baculovirus
Target Names	KRT19
Expression Region	1-400aa
Notes	Repeated freezing and thawing is not recommended. Store working aliquots at 4°C for up to one week.
Tag Info	N-terminal 10xHis-tagged and C-terminal Myc-tagged
Mol. Weight	48
Protein Length	Full length
Image	



(Tris-Glycine gel) Discontinuous SDS-PAGE (reduced) with 5% enrichment gel and 15% separation gel.

Shelf Life

The shelf life is related to many factors, storage state, buffer ingredients, storage temperature and the stability of the protein itself.

Generally, the shelf life of liquid form is 6 months at -20°C/-80°C. The shelf life of lyophilized form is 12 months at -20°C/-80°C.