



Recombinant Human Epidermal growth factor receptor (EGFR), partial (Active)

Product Code	CSB-MP007479HU
Abbreviation	Recombinant Human EGFR protein, partial (Active)
Storage	The shelf life is related to many factors, storage state, buffer ingredients, storage temperature and the stability of the protein itself. Generally, the shelf life of liquid form is 6 months at -20°C/-80°C. The shelf life of lyophilized form is 12 months at -20°C/-80°C.
Uniprot No.	P00533
Storage Buffer	Lyophilized from a 0.2 µm filtered 20 mM Tris-HCl, 0.5 M NaCl, 6% Trehalose, pH 8.0
Product Type	Others
Immunogen Species	Homo sapiens (Human)
Biological Activity	①Measured by its binding ability in a functional ELISA. Immobilized EGFR at 1 µg/ml can bind Anti-EGFR recombinant antibody, the EC ₅₀ of human EGFR protein is 2.867-3.571 ng/ml.②Human EGF protein captured on COOH chip can bind Human EGFR protein, his and Myc tag (CSB-MP007479HU) with an affinity constant of 11.9nM as detected by LSPR Assay.③Measured by its binding ability in a functional ELISA. Immobilized EGFR at 1 µg/ml can bind Cetuximab, the EC ₅₀ of human EGFR protein is 0.6919-1.047 ng/ml.
Purity	Greater than 95% as determined by SDS-PAGE. Greater than 95% as determined by SEC-HPLC.
Sequence	LEEKKVCQGTSNKLTLQGFEDHFLSLQRMFNCEVVLGNLEITYVQRNYDLS FLKTIQEVAGYVLIANTVERIPLNLQIIRGNMYEENSALAVLSNYDANKTGLK ELPMRNLQEILHGAVRFSNNPALCNVESIQWRDIVSSDFLSNMSMDFQNHLS CQKCDPSCPNGSCWGAGEENCQKLTKIICAQQCSGRCRGKSPSDCCHNQCA AGCTGPRESCLVCRKFRDEATCKDTCPLMLYNPTTYQMDVNPEGKYSFG ATCVKKCPRNYVVDHGSVCRACGADSYEMEEDGVRKCKKCEGPCRKVCN GIGIGEFKDSLINATNIKHFNCTISGDLHILPVAFRGDSFTHTPPLDPQELDIL KTVKEITGFLLIQAWPENRTDLHAFENLEIIRGRTKQHGQFSLAVVSLNITSLGL RSLKEISDGDVIIISGNKNCYANTINWKKLFGTSGQKTKIISNRGENSCKATGQV CHALCSPEGCWGPEPRDCVSCRNVSRGRECVDKCNLLEGEPRFVENSECI QCHPECLPQAMNITCTGRGPDNCIQAHYIDGPHCVKTCPAGVMGENNTLVW KYADAGHVCHLCHPNCTYGCTGPGLEGCTNGPKIPS
Research Area	Cancer
Source	Mammalian cell
Target Names	EGFR
Expression Region	25-645aa
Notes	Repeated freezing and thawing is not recommended. Store working aliquots at



4°C for up to one week.

Tag Info

N-terminal 10xHis-tagged and C-terminal Myc-tagged

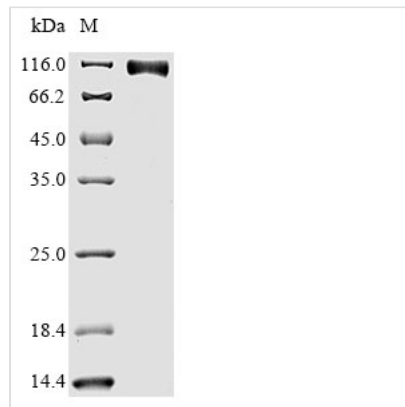
Mol. Weight

73.6 kDa

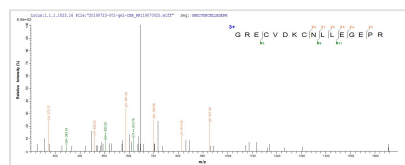
Protein Length

Extracellular Domain

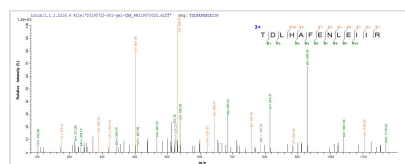
Image



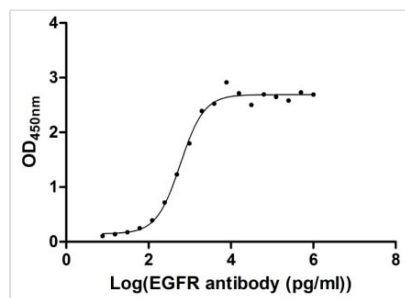
(Tris-Glycine gel) Discontinuous SDS-PAGE (reduced) with 5% enrichment gel and 15% separation gel.



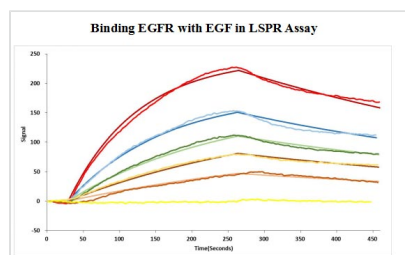
Based on the SEQUEST from database of Mammalian Cell host and target protein, the LC-MS/MS Analysis result of CSB-MP007479HU could indicate that this peptide derived from Mammalian Cell-expressed Homo sapiens (Human) EGFR.



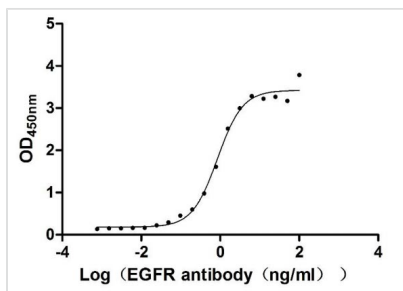
Based on the SEQUEST from database of Mammalian Cell host and target protein, the LC-MS/MS Analysis result of CSB-MP007479HU could indicate that this peptide derived from Mammalian Cell-expressed Homo sapiens (Human) EGFR.



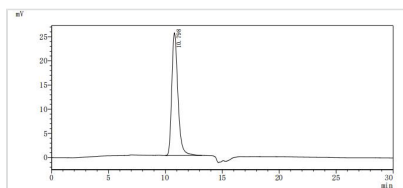
Measured by its binding ability in a functional ELISA. Immobilized EGFR at 1 µg/ml can bind Anti-EGFR recombinant antibody, the EC50 of human EGFR protein is 2.867-3.571 ng/ml.



Human EGF protein captured on COOH chip can bind Human EGFR protein, his and Myc tag (CSB-MP007479HU) with an affinity constant of 11.9nM as detected by LSPR Assay.


Activity

Measured by its binding ability in a functional ELISA. Immobilized EGFR at 1 $\mu\text{g/ml}$ can bind Cetuximab, the EC_{50} of human EGFR protein is 0.6919-1.047 ng/ml.



The purity of EGFR was greater than 95% as determined by SEC-HPLC

Endotoxin

Less than 1.0 EU/ μg as determined by LAL method.

Shelf Life

The shelf life is related to many factors, storage state, buffer ingredients, storage temperature and the stability of the protein itself.

Generally, the shelf life of liquid form is 6 months at $-20^{\circ}\text{C}/-80^{\circ}\text{C}$. The shelf life of lyophilized form is 12 months at $-20^{\circ}\text{C}/-80^{\circ}\text{C}$.