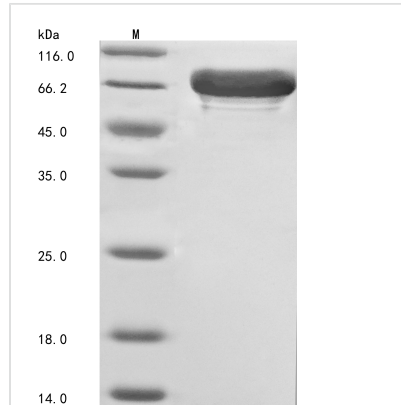




Recombinant Human Cryptochrome-1 (CRY1)

Product Code	CSB-EP621957HU
Abbreviation	Recombinant Human CRY1 protein
Storage	The shelf life is related to many factors, storage state, buffer ingredients, storage temperature and the stability of the protein itself. Generally, the shelf life of liquid form is 6 months at -20°C/-80°C. The shelf life of lyophilized form is 12 months at -20°C/-80°C.
Uniprot No.	Q16526
Storage Buffer	Tris-based buffer,50% glycerol
Product Type	Recombinant Proteins
Immunogen Species	Homo sapiens (Human)
Purity	≥ 85% as determined by SDS-PAGE.
Sequence	MGVNAVHWFRKGLRLHDNPALKECIQGADTIRCVYILDPWFAGSSNVGINRW RFLQCLELDANLRKLNSRLFVIRGQPADVFPRLFKEWNITKLSIEYDSEFPG KERDAAIKKLATEAGVEVIVRISHTLYDLDKIIELNGGQPPLTYKRFQTLISKMEP LEIPVETITSEVIEKCTTPLSDDHDEKYGVPSLEELGFDTDGLSSAVWPGGETE ALTRLERHLERKAWVANFERPRMNANLLASPTGLSPYLRFGCLSCRLFYFKL TDLYKKVKNSSPPLSLYGQLLWREFFYTAATNNPRFDKMEGNPICVQIPWDK NPEALAKWAEGR TGFPWIDAIMTQLRQEGWIHHLARHAVACFLTRGDLWISW EEGMKVFEELLDADWSINAGSWMWLSCSSFFQQFFHCYCPVGFGRRTDPN GDYIRRYLPVLRGFPKAYIYDPWNAPEGIQKVAKCLIGVNYPKPMVNHAEASRL NIERMKQIYQQLSR YRGLGLLASVSPNPNNGGFMGYSAENIPGCSSSGSCS QGSGILHYAHGDSQQTHLLKQGRSSMGTGLSGGKRPSQEEDTQSIGPKVQR QSTN
Research Area	Cardiovascular
Source	E.coli
Target Names	CRY1
Protein Names	Recommended name: Cryptochrome-1
Expression Region	1-586aa
Notes	Repeated freezing and thawing is not recommended. Store working aliquots at 4°C for up to one week.
Tag Info	N-terminal 10xHis-tagged and C-terminal Myc-tagged
Mol. Weight	73.8 kDa
Protein Length	Full Length
Image	



(Tris-Glycine gel) Discontinuous SDS-PAGE (reduced) with 5% enrichment gel and 15% separation gel.

Shelf Life

The shelf life is related to many factors, storage state, buffer ingredients, storage temperature and the stability of the protein itself.

Generally, the shelf life of liquid form is 6 months at -20°C/-80°C. The shelf life of lyophilized form is 12 months at -20°C/-80°C.