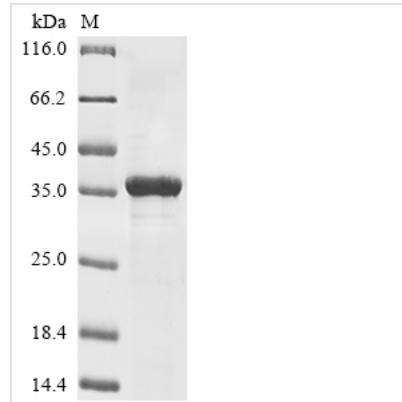




Recombinant Mouse Brain-specific serine protease 4 (Prss22)

Product Code	CSB-EP880636MO
Abbreviation	Recombinant Mouse Prss22 protein
Storage	The shelf life is related to many factors, storage state, buffer ingredients, storage temperature and the stability of the protein itself. Generally, the shelf life of liquid form is 6 months at -20°C/-80°C. The shelf life of lyophilized form is 12 months at -20°C/-80°C.
Uniprot No.	Q9ER10
Storage Buffer	Tris-based buffer,50% glycerol
Product Type	Recombinant Proteins
Immunogen Species	Mus musculus(Mouse)
Purity	Greater than 85% as determined by SDS-PAGE.
Sequence	ATIRVSPDCGKPKQQLNRIVGGEDSMDAQWPWIVSILKNGSHHCAGSLLTNRW VVTAAHCFKSNMDKPSLFSVLLGAWKLGSPGPRSQKVGIAWVLPHPRYSWKE GTHADIALVRLEHSIQFSERILPICLPDSSVRLPPKTDWCWIAGWGSIQDGVPLPH PQTLQKLKVPIDSELCKSLYWRGAGQEAITEGMLCAGYLEGERDACLGDSGG PLMCQVDDHWLLTGIISWGEGCADDRPGVYTSLLAHRSWVQRIVQGVQLRGY LADSGDTGSS
Research Area	Cell Biology
Source	E.coli
Target Names	Prss22
Protein Names	Recommended name: Brain-specific serine protease 4 Short name= BSSP-4 EC= 3.4.21.- Alternative name(s): Serine protease 22 Serine protease 26 Tryptase epsilon
Expression Region	33-306aa
Notes	Repeated freezing and thawing is not recommended. Store working aliquots at 4°C for up to one week.
Tag Info	N-terminal 6xHis-tagged
Mol. Weight	35.9 kDa
Protein Length	Full Length of Mature Protein
Image	



(Tris-Glycine gel) Discontinuous SDS-PAGE (reduced) with 5% enrichment gel and 15% separation gel.

Shelf Life

The shelf life is related to many factors, storage state, buffer ingredients, storage temperature and the stability of the protein itself.

Generally, the shelf life of liquid form is 6 months at -20°C/-80°C. The shelf life of lyophilized form is 12 months at -20°C/-80°C.