

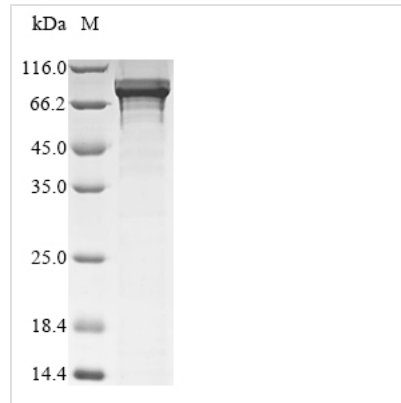


# Recombinant Human B-cell lymphoma 6 protein (BCL6)

<b>Product Code</b>	CSB-EP002625HU
<b>Abbreviation</b>	Recombinant Human BCL6 protein
<b>Storage</b>	The shelf life is related to many factors, storage state, buffer ingredients, storage temperature and the stability of the protein itself. Generally, the shelf life of liquid form is 6 months at -20°C/-80°C. The shelf life of lyophilized form is 12 months at -20°C/-80°C.
<b>Uniprot No.</b>	P41182
<b>Storage Buffer</b>	Tris-based buffer,50% glycerol
<b>Product Type</b>	Recombinant Proteins
<b>Immunogen Species</b>	Homo sapiens (Human)
<b>Purity</b>	Greater than 90% as determined by SDS-PAGE.
<b>Sequence</b>	MASPADSCIQFTRHASDVLLNLRSLRSDILTDVVIVVSREQFRAHKTVLMACS GLFYSIFTDQLKCNLSVINLDPEINPEGFCILLDFMYTSRLNLREGNIMAVMATA MYLQMEHVVDTCRKFIKASEAEMVSAIKPPREEFLNSRMLMPQDIMAYRGREV VENNLPLRSAPGCEsRAFAPSLYsGLSTPPASYSMYSHLPVSSLLFSDEEFRD VRMPVANPFPKERALPCDSARPVPGEYSRPTLEVSPNVCHSNIYSPKETIPEE ARSDMHYSVAEGLKPAAPSARNAPYFPCDKASKEEERPSSSEDEIALHFEPNNA PLNRKGLVSPQSPQKSDCQPNSPTESCSSKNACILQASGSPPAKSPTDPKAC NWKKYKFIVLNSLNQNAKPEGPEQAELGRLSPRAYTAPPACQPPMEPENLDL QSPTKLSASGEDSTIPQASRLNNIVNRSMTGSPRSSSESHSPLYMHPPKCTSC GSQSPQHAEMCLHTAGPTFPEEMGETQSEYSDSSCENGAFFCNECDCRFSE EASLKRHTLQTHSDKPYKCDRCQASFRYKGNLASHKTVHTGEKPYRCNICGA QFNRPANLKTHTRIHSGEKPYKCETCGARFVQVAHLRAHVLIHTGEKPYPCIC GTRFRHLQTLKSHLRIHTGEKPYHCEKCNLHFRHKSQRLRLHLRQKHGAITNTK VQYRVSATDLPELPAKAC
<b>Research Area</b>	Epigenetics and Nuclear Signaling
<b>Source</b>	E.coli
<b>Target Names</b>	BCL6
<b>Protein Names</b>	Recommended name: B-cell lymphoma 6 protein Short name= BCL-6Alternative name(s): B-cell lymphoma 5 protein Short name= BCL-5 Protein LAZ-3 Zinc finger and BTB domain-containing protein 27 Zinc finger protein 51
<b>Expression Region</b>	1-706aa
<b>Notes</b>	Repeated freezing and thawing is not recommended. Store working aliquots at 4°C for up to one week.
<b>Tag Info</b>	N-terminal GST-tagged
<b>Mol. Weight</b>	105.5 kDa

**Protein Length**

Full Length

**Image**

(Tris-Glycine gel) Discontinuous SDS-PAGE (reduced) with 5% enrichment gel and 15% separation gel.

**Shelf Life**

The shelf life is related to many factors, storage state, buffer ingredients, storage temperature and the stability of the protein itself.

Generally, the shelf life of liquid form is 6 months at -20°C/-80°C. The shelf life of lyophilized form is 12 months at -20°C/-80°C.