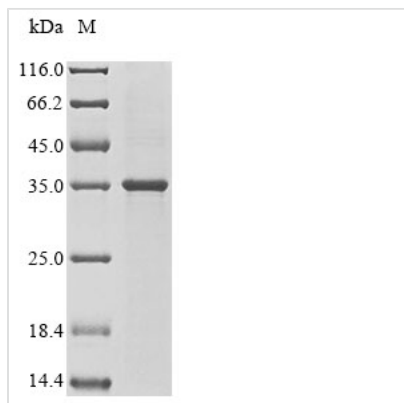




Recombinant Mouse Cathepsin W (Ctsw)

Product Code	CSB-EP006205MO
Abbreviation	Recombinant Mouse Ctsw protein
Storage	The shelf life is related to many factors, storage state, buffer ingredients, storage temperature and the stability of the protein itself. Generally, the shelf life of liquid form is 6 months at -20°C/-80°C. The shelf life of lyophilized form is 12 months at -20°C/-80°C.
Uniprot No.	P56203
Storage Buffer	Tris-based buffer,50% glycerol
Product Type	Recombinant Proteins
Immunogen Species	Mus musculus(Mouse)
Purity	≥ 85% as determined by SDS-PAGE.
Sequence	VPRTCDWRKAKNISSVKNQGSCKCCWAMAAADNIQALWRIKHQQFVDVSVQ ELLDCERCNGCNGGFVWDAYLTVLNNSGLASEKDYPFQGDRKPHRCLAKK YKKVAWIQDFTMLSNNEQAIHAYLAVHGPIVTVINMKLLQHYQKGVKATPSSC DPRQVDHSVLLVGFGEKEGEMQTGTVLSHSRKRHRSSPYWILKNSWGAHWG EKGYFRLYRGNNTCGVTKYPFTAQVDSPVKKARTSCPP
Research Area	Immunology
Source	E.coli
Target Names	Ctsw
Protein Names	Recommended name: Cathepsin W EC= 3.4.22.- Alternative name(s): Lymphopain
Expression Region	126-371aa
Notes	Repeated freezing and thawing is not recommended. Store working aliquots at 4°C for up to one week.
Tag Info	N-terminal 10xHis-tagged and C-terminal Myc-tagged
Mol. Weight	35.2 kDa
Protein Length	Full Length of Mature Protein

Image



(Tris-Glycine gel) Discontinuous SDS-PAGE (reduced) with 5% enrichment gel and 15% separation gel.

Shelf Life

The shelf life is related to many factors, storage state, buffer ingredients, storage temperature and the stability of the protein itself.

Generally, the shelf life of liquid form is 6 months at -20°C/-80°C. The shelf life of lyophilized form is 12 months at -20°C/-80°C.