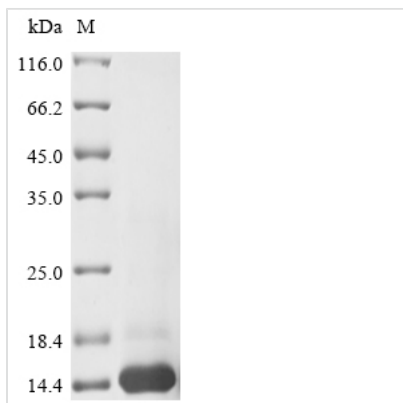




# Recombinant Human Macrophage migration inhibitory factor (MIF)

<b>Product Code</b>	CSB-YP013826HU
<b>Abbreviation</b>	Recombinant Human MIF protein
<b>Storage</b>	The shelf life is related to many factors, storage state, buffer ingredients, storage temperature and the stability of the protein itself. Generally, the shelf life of liquid form is 6 months at -20°C/-80°C. The shelf life of lyophilized form is 12 months at -20°C/-80°C.
<b>Uniprot No.</b>	P14174
<b>Storage Buffer</b>	Tris-based buffer,50% glycerol
<b>Product Type</b>	Recombinant Proteins
<b>Immunogen Species</b>	Homo sapiens (Human)
<b>Purity</b>	≥ 85% as determined by SDS-PAGE.
<b>Sequence</b>	PMFIVNTNVPRASVPDGFLSELTQQLAQATGKPPQYIAVHVVPDQLMAFGGSS EPCALCSLHSIGKIGGAQNRYSKLLCGLLAERLRISPDRVYINYYDMNNAANVG WNNSTFA
<b>Research Area</b>	Immunology
<b>Source</b>	Yeast
<b>Target Names</b>	MIF
<b>Protein Names</b>	Recommended name: Macrophage migration inhibitory factor Short name= MIF EC= 5.3.2.1 Alternative name(s): Glycosylation-inhibiting factor Short name= GIF L-dopachrome isomerase L-dopachrome tautomerase EC= 5.3.3
<b>Expression Region</b>	2-115aa
<b>Notes</b>	Repeated freezing and thawing is not recommended. Store working aliquots at 4°C for up to one week.
<b>Tag Info</b>	N-terminal 6xHis-tagged
<b>Mol. Weight</b>	14.4
<b>Protein Length</b>	Full Length of Mature Protein
<b>Image</b>	



(Tris-Glycine gel) Discontinuous SDS-PAGE (reduced) with 5% enrichment gel and 15% separation gel.

### Shelf Life

The shelf life is related to many factors, storage state, buffer ingredients, storage temperature and the stability of the protein itself.

Generally, the shelf life of liquid form is 6 months at -20°C/-80°C. The shelf life of lyophilized form is 12 months at -20°C/-80°C.