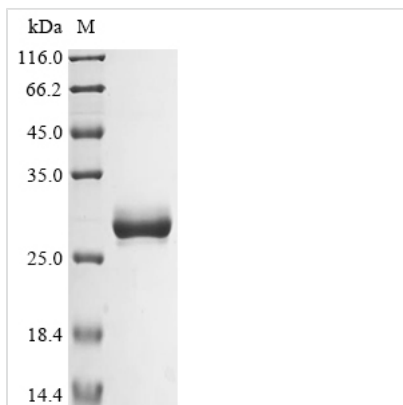




# Recombinant Human Basement membrane-specific heparan sulfate proteoglycan core protein (HSPG2), partial

<b>Product Code</b>	CSB-MP010868HU
<b>Abbreviation</b>	Recombinant Human HSPG2 protein, partial
<b>Storage</b>	The shelf life is related to many factors, storage state, buffer ingredients, storage temperature and the stability of the protein itself. Generally, the shelf life of liquid form is 6 months at -20°C/-80°C. The shelf life of lyophilized form is 12 months at -20°C/-80°C.
<b>Uniprot No.</b>	P98160
<b>Storage Buffer</b>	Tris-based buffer,50% glycerol
<b>Product Type</b>	Recombinant Proteins
<b>Immunogen Species</b>	Homo sapiens (Human)
<b>Purity</b>	Greater than 85% as determined by SDS-PAGE.
<b>Sequence</b>	DAPGQYGAYFHDDGFLAFPGHVFVSRSLPEVPETIELEVRTSTASGLLLWQGVE VGEAGQGKDFISLGLQDGHLVFRYQLGSGEARLVSEDPINDGEWHRVTALRE GRRGSIQVDGEELVSGRSPGPNVAVNAKGSVYIGGAPDVATLTGGRFSSGIT GCVKNLVLHSARPGAPPPQPLDLQHRAQAGANTRPCPS
<b>Research Area</b>	Cancer
<b>Source</b>	Mammalian cell
<b>Target Names</b>	HSPG2
<b>Protein Names</b>	Recommended name: Basement membrane-specific heparan sulfate proteoglycan core protein Short name= HSPGAlternative name(s): Perlecan Short name= PLCCleaved into the following 2 chains: 1. Endorepellin 2. LG3 peptide
<b>Expression Region</b>	4197-4391aa
<b>Notes</b>	Repeated freezing and thawing is not recommended. Store working aliquots at 4°C for up to one week.
<b>Tag Info</b>	N-terminal 10xHis-tagged and C-terminal Myc-tagged
<b>Mol. Weight</b>	25.6
<b>Protein Length</b>	Partial
<b>Image</b>	



(Tris-Glycine gel) Discontinuous SDS-PAGE (reduced) with 5% enrichment gel and 15% separation gel.

### Shelf Life

The shelf life is related to many factors, storage state, buffer ingredients, storage temperature and the stability of the protein itself.

Generally, the shelf life of liquid form is 6 months at -20°C/-80°C. The shelf life of lyophilized form is 12 months at -20°C/-80°C.